

WAAS CH <b>71055</b> <b>W25A</b>	APP CRS <b>249°</b>	Rwy Idg TDZE Apt Elev	<b>6501</b> <b>2628</b> <b>2630</b>
--	------------------------	-----------------------------	---

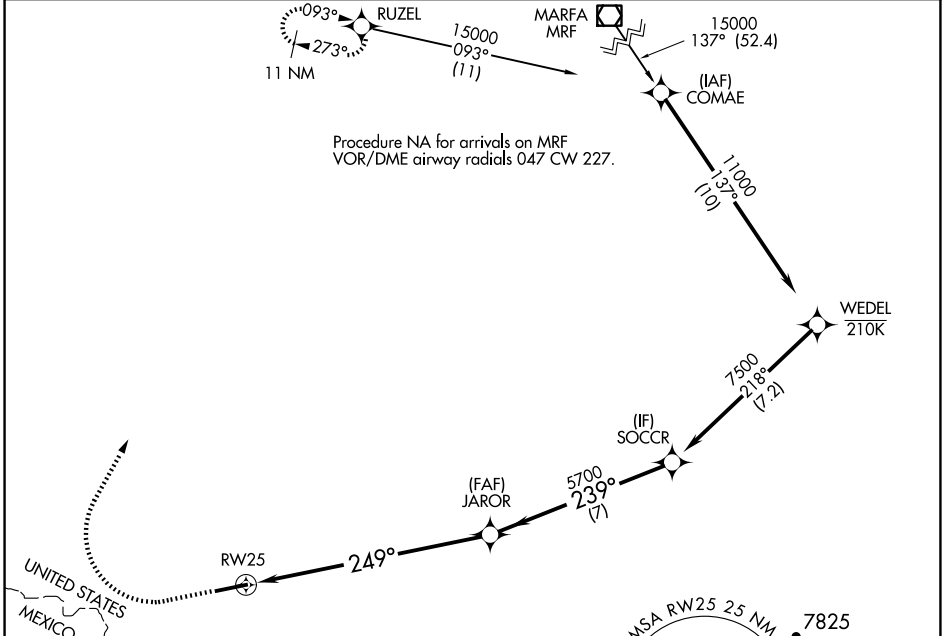
# RNAV (GPS) Z RWY 25

LAJITAS INTL (T89)

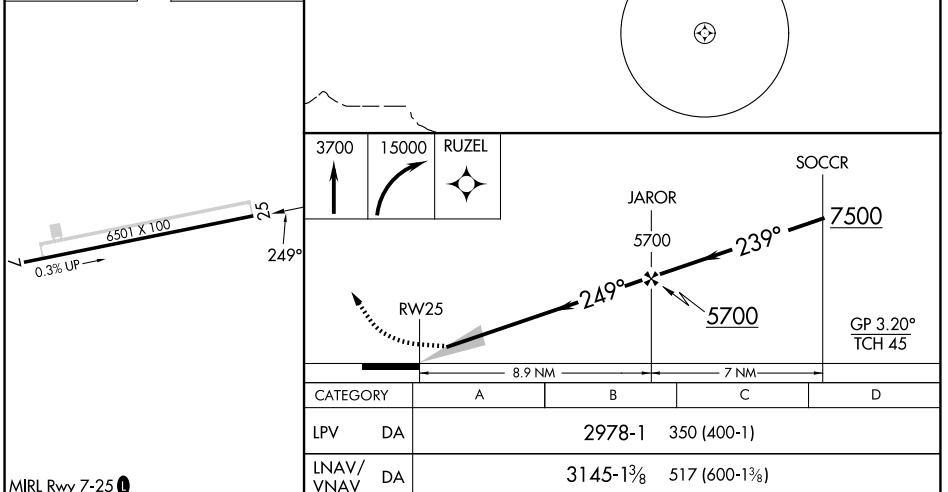
RNP APCH - GPS. MISSED APPROACH: Climb to 3700 then climbing right turn to 15000 direct RUZEL and hold, continue climb-in-hold to 15000. MISSED APPROACH requires minimum climb of 383 feet per NM to 5060, if unable to meet climb gradient, see RNAV (GPS) Y RWY 25.

▼ For uncompensated Baro-VNAV systems, LNAV/VNAV NA below -20°C or above 54°C. When local altimeter setting not received, procedure NA.

AWOS-3 <b>119.275</b>	ALBUQUERQUE CENTER <b>135.875 292.15</b>	UNICOM <b>122.7 (CTAF) ①</b>
--------------------------	---	---------------------------------



ELEV 2630	TDZE 2628
-----------	-----------



MIRL Rwy 7-25 ①

SC-3, 15 MAY 2025 to 12 JUN 2025

SC-3, 15 MAY 2025 to 12 JUN 2025