

RNAV (GPS) RWY 7

LAJITAS INTL (T89)

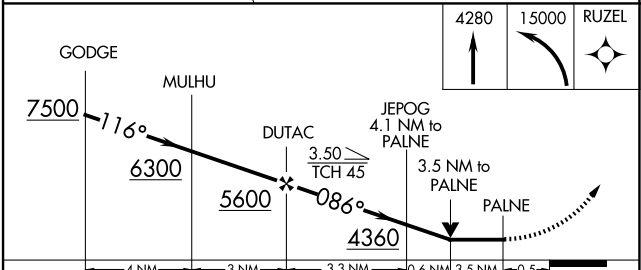
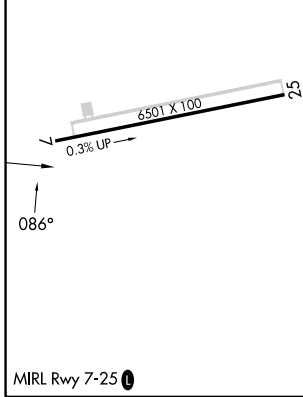
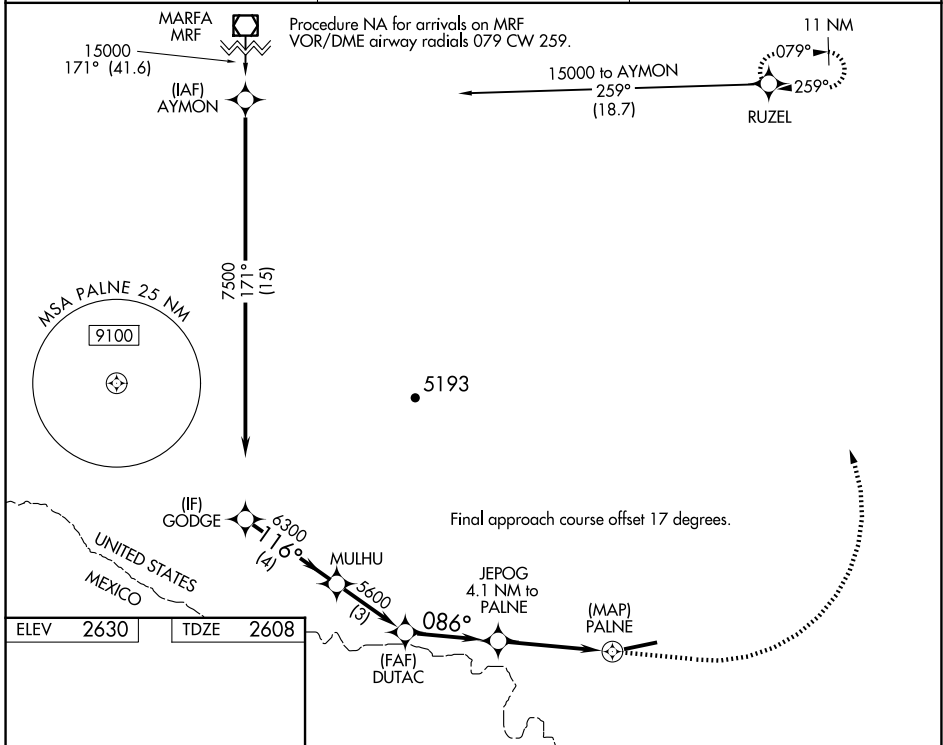
| | | |
|-------------|----------|-------------|
| APP CRS | Rwy Idg | 6501 |
| 086° | TDZE | 2608 |
| | Apt Elev | 2630 |

RNP APCH - GPS.

▼ Rwy 7 helicopter visibility reduction below 3/4 SM NA. When local altimeter setting not received, use Presidio Lely Intl altimeter setting and increase all MDA 140 feet. VDP NA when using Presidio Lely Intl altimeter setting. Circling NA south of Rwy 7-25.

MISSED APPROACH: Climb to 4280 then climbing left turn to 15000 direct RUZEL and hold, continue climb in hold to 15000.

| | | |
|--------------------------|---|---------------------------------|
| AWOS-3 119.275 | ALBUQUERQUE CENTER 135.875 292.15 | UNICOM 122.7 (CTAF) 0 |
|--------------------------|---|---------------------------------|



| CATEGORY | A | B | C | D |
|----------|---------------------------------|---------------------------------|-------------------------|-------------------------|
| LNAV | 4140-1 1/4 1532 (1600-1 1/4) | 4140-1 1/2 1532 (1600-1 1/2) | 4140-3 | 1532 (1600-3) |
| CIRCLING | 4140-1 1/4 1510 (1600-1 1/4) | 4140-1 1/2 1510 (1600-1 1/2) | 4140-3 1510 (1600-3) | 4180-3 1550 (1600-3) |

SC-3, 15 MAY 2025 to 12 JUN 2025

SC-3, 15 MAY 2025 to 12 JUN 2025