

WAAS CH 98719 W35A	APP CRS 352°	Rwy Idg 3776 TDZE 861 Apt Elev 861
--	------------------------	---

RNAV (GPS) RWY 35

MARION (C17)

RNP APCH - GPS.

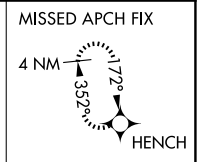
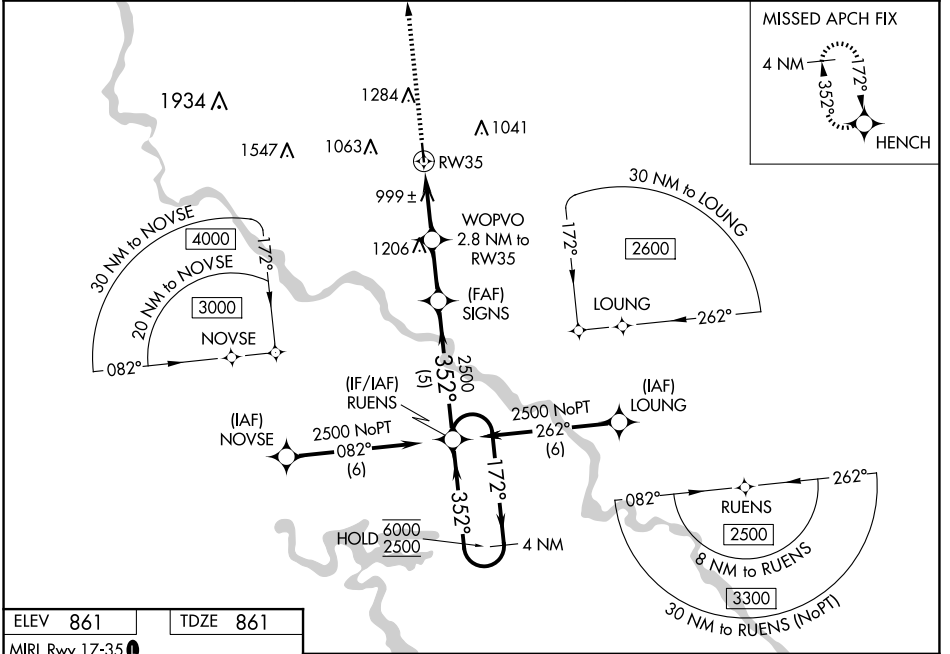
NA Baro-VNAV NA. Circling Rwy 17, NA at night. Circling NA for Cat B west of Rwy 17/35. Use The Eastern Iowa altimeter setting; when not received, use Monticello Rgnl altimeter setting; increase LPV DA to 1133; increase LNAV/VNAV DA to 1162; increase all MDAs 40 feet. For uncompensated Baro-VNAV system, LNAV/VNAV NA below -6°C or above 54°C.

MISSED APPROACH: Climb to 2600 direct HENCH and hold.

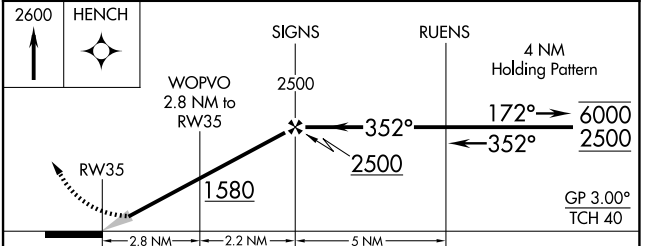
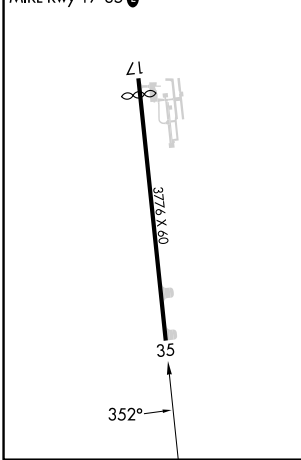
CID ASOS
124.15

CEDAR RAPIDS APP CON *
134.05 266.8

UNICOM
122.7 (CTAF) 0



ELEV 861 TDZE 861
MIRL Rwy 17-35



CATEGORY	A	B	C	D
LPV DA	1111-1	250 (300-1)		NA
LNAV/VNAV DA	1140-1	279 (300-1)		NA
LNAV MDA	1280-1	419 (500-1)		NA
CIRCLING	1280-1 419 (500-1)	1340-1 479 (500-1)		NA

NC-3, 15 MAY 2025 to 12 JUN 2025

NC-3, 15 MAY 2025 to 12 JUN 2025