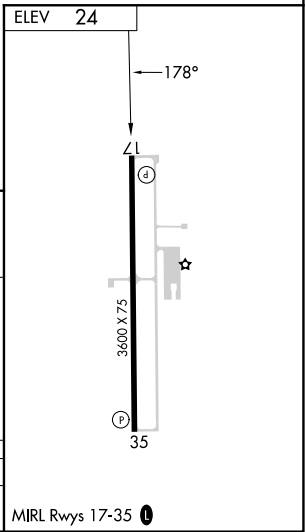
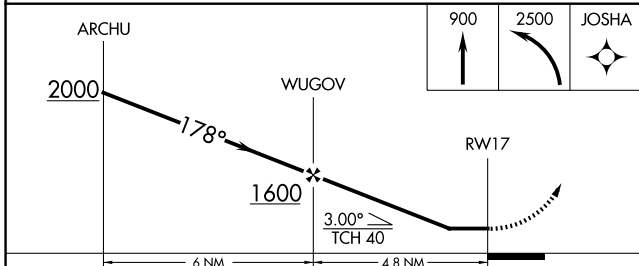
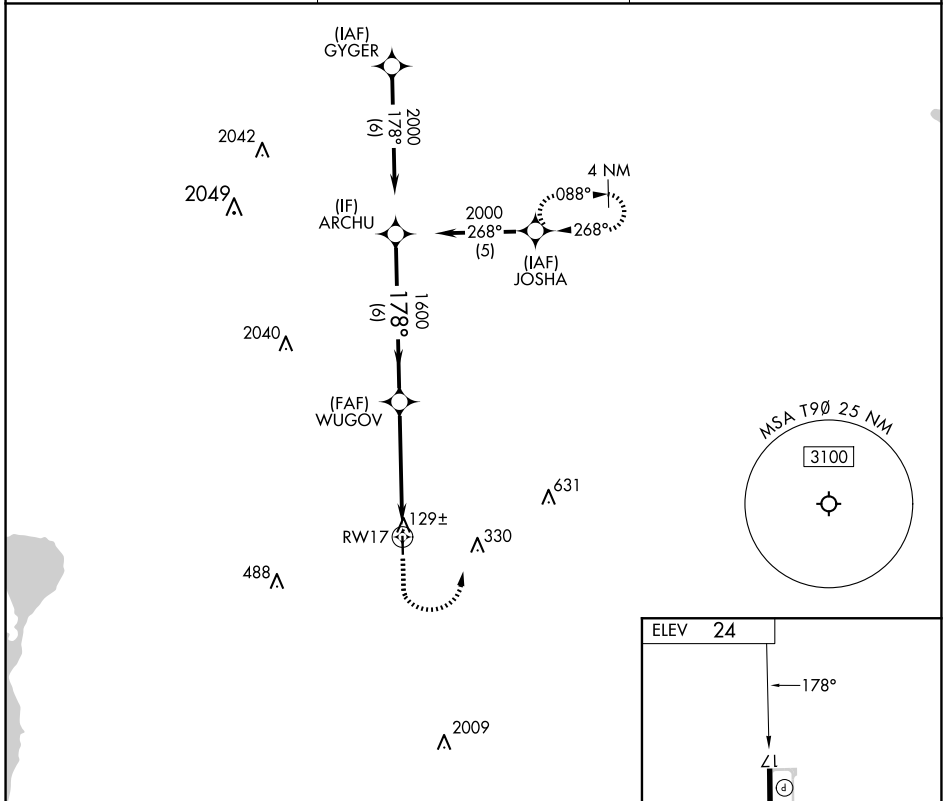


APP CRS	Rwy Idg	NA
178°	TDZE	NA
	Apt Elev	24

**RNAV (GPS)-A**  
CHAMBERS COUNTY/WINNIE STOWELL (T9 $\emptyset$ )

RNP APCH - GPS.	<p><b>⚠</b> Procedure NA at night. Rwy 17 and 35 helicopter visibility reduction below 1 SM NA. Use Beaumont altimeter setting; when not received, use Liberty altimeter setting and increase all MDA's 20 feet.</p>	<p><b>⚠</b> MISSED APPROACH: Climb to 900 then climbing left turn to 2500 direct JOSHUA and hold.</p>
-----------------	--	---

BMT AWOS-3PT <b>118.425</b>	HOUSTON APP CON <b>121.3 377.1</b>	CTAF <b>122.9 <math>\emptyset</math></b>
--------------------------------	---------------------------------------	---



CATEGORY	A	B	C	D
CIRCLING	480-1	456 (500-1)	NA	

SC-5, 15 MAY 2025 to 12 JUN 2025

SC-5, 15 MAY 2025 to 12 JUN 2025