

WAAS CH <b>65648</b> <b>W19A</b>	APP CRS <b>188°</b>	Rwy Idg <b>6100</b> TDZE <b>5049</b> Apt Elev <b>5065</b>
--	------------------------	---

# RNAV (GPS) RWY 19

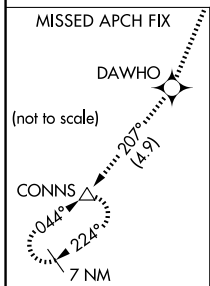
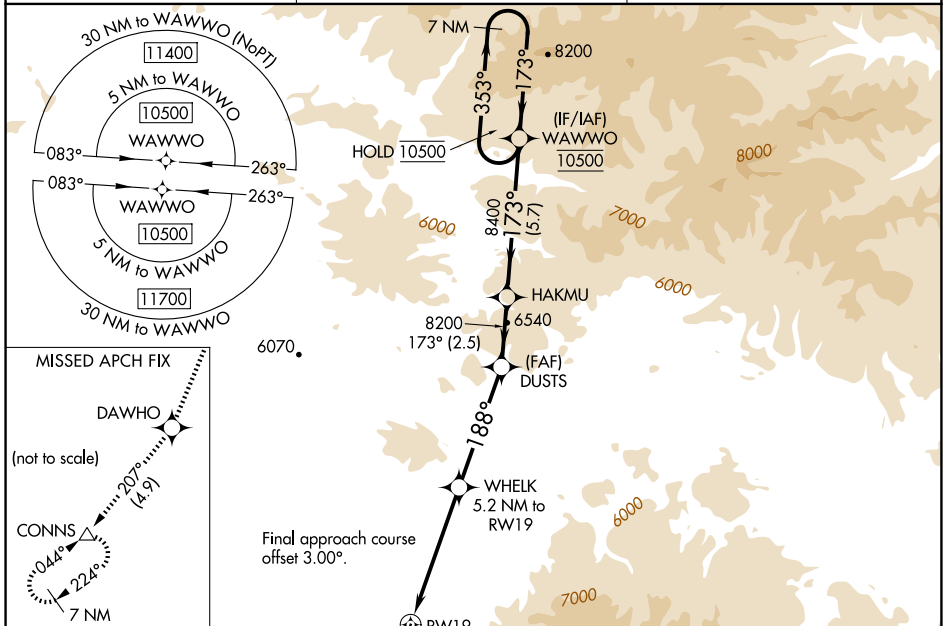
WHITE SULPHUR SPRINGS (7S6)

RNP APCH - GPS.

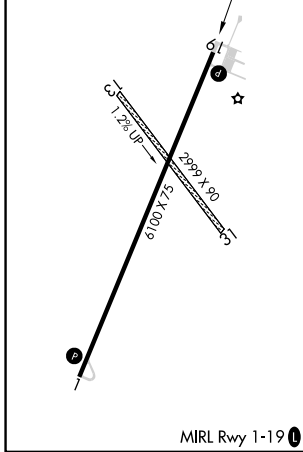
⚠ For uncompensated Baro-VNAV systems, LNAV/VNAV NA below -25°C or above 54°C. Rwy 19 helicopter visibility reduction below 3/4 SM NA. Circling NA to Rwys 13 and 31. Circling NA for Cats C and D east of Rwy 1-19. Circling NA for all Cats east of Rwy 1-19 at night.

MISSED APPROACH: Climb to 5700 then climb to 10000 direct DAWHO and on track 207° to CONNS and hold, continue climb-in-hold to 10000.

AWOS-3PT <b>118.525</b>	SALT LAKE CENTER <b>133.4 285.4</b>	CTAF <b>122.9</b>
----------------------------	--	----------------------



ELEV 5065	TDZE 5049
-----------	-----------



	5700	10000	DAWHO	tr 207°	CONNS	WAWWO					
						WHELK		DUSTS	HAKMU	7 NM Holding Pattern	
						5.2 NM to RWY 19		8200		353° → 10500	
						2.5 NM to RWY 19		8400		← 173°	
						6740		8200		GP 3.00° TCH 35	
						2.5 NM	2.7 NM	4.6 NM	2.5 NM	5.7 NM	
CATEGORY	A		B		C		D				
LPV DA			5415-1		366 (400-1)						
LNAV/VNAV DA			5495-1 3/8		446 (500-1 3/8)						
LNAV MDA	5880-1 831 (900-1)		5880-1 1/4 831 (900-1 1/4)		5880-2 1/2 831 (900-2 1/2)						
CIRCLING	5880-1 1/4 815 (900-1 1/4)		5920-1 1/4 855 (900-1 1/4)		5920-2 1/2 855 (900-2 1/2)		5920-2 3/4 855 (900-2 3/4)				

NW-1, 15 MAY 2025 to 12 JUN 2025

NW-1, 15 MAY 2025 to 12 JUN 2025