

WAAS CH 81848	APP CRS 008°	Rwy Idg TDZE Apt Elev	6100 5046 5065
-------------------------	------------------------	-----------------------------	---

RNAV (GPS) RWY 1

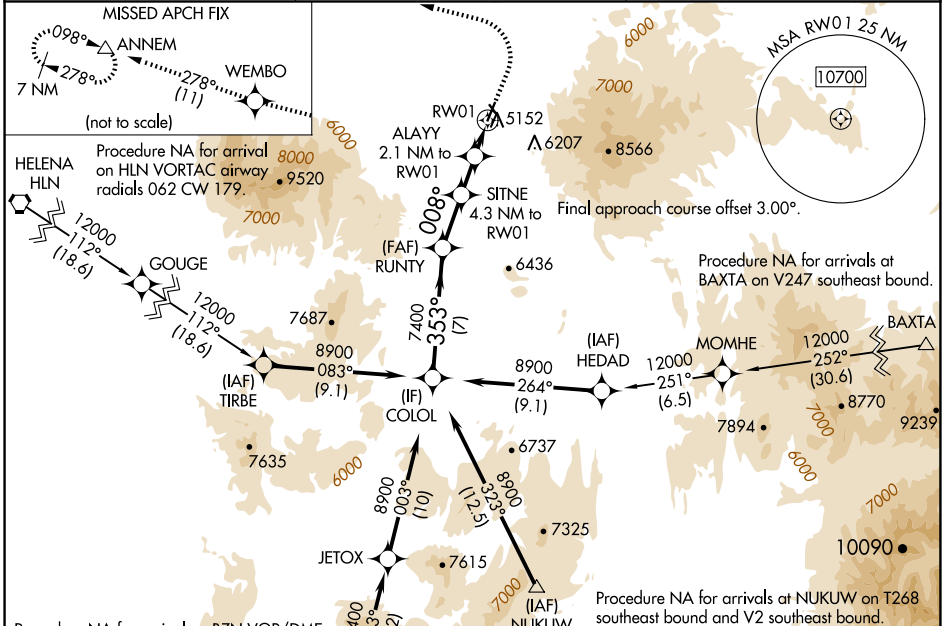
WHITE SULPHUR SPRINGS (7S6)

RNP APCH - GPS.

▼ For uncompensated Baro-VNAV systems, LNAV/VNAV NA below -25°C or above 54°C. Circling NA to Rwy's 13 and 31. Circling NA for Cats C and D east of Rwy 1-19. Circling NA for all Cats east of Rwy 1-19 at night.

MISSED APPROACH: Climb to 5500 then climbing left turn to 9400 direct WEMBO and on track 278° to ANNEM and hold.

AWOS-3PT 118.525	SALT LAKE CENTER 133.4 285.4	CTAF 122.9
----------------------------	--	----------------------

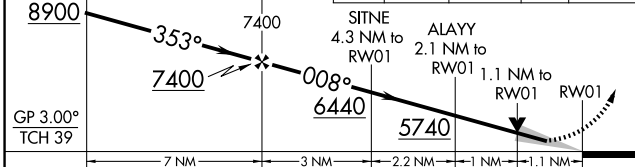


ELEV 5065	TDZE 5046
-----------	-----------

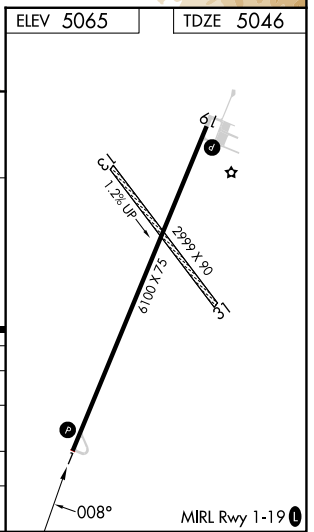
VGSI and RNAV glidepath not coincident
COLOL (VGSI Angle 3.00/TCH 39).

5500 9400 WEMBO tr 278° ANNEM

↑ ↶ ✦



CATEGORY	A	B	C	D
LPV DA		5296-1	250 (300-1)	
LNAV/VNAV DA		5313-1	267 (300-1)	
LNAV MDA		5420-1	374 (400-1)	
CIRCLING	5620-1 555 (600-1)	5920-1¼ 855 (900-1¼)	5920-2¾ 855 (900-2¾)	5920-3 855 (900-3)



NW-1, 15 MAY 2025 to 12 JUN 2025

NW-1, 15 MAY 2025 to 12 JUN 2025