

# COPTER VOR/DME or TACAN 056°

VORTAC LDN <b>114.3</b> Chan <b>90</b>	APCH CRS <b>056°</b>	Rwy Idg TDZE Arpt Elev <b>50</b> <b>1707</b> <b>1707</b>
--	-------------------------	---

AL-11678 [USN]

BLUEGRASS (9VA5)

▼ Circling not authorized.  
Visibility reduction by helicopter NA.

MISSED APPROACH: Climb to 4000, then right turn to intercept LDN VORTAC R-056 to WLCAT and hold.

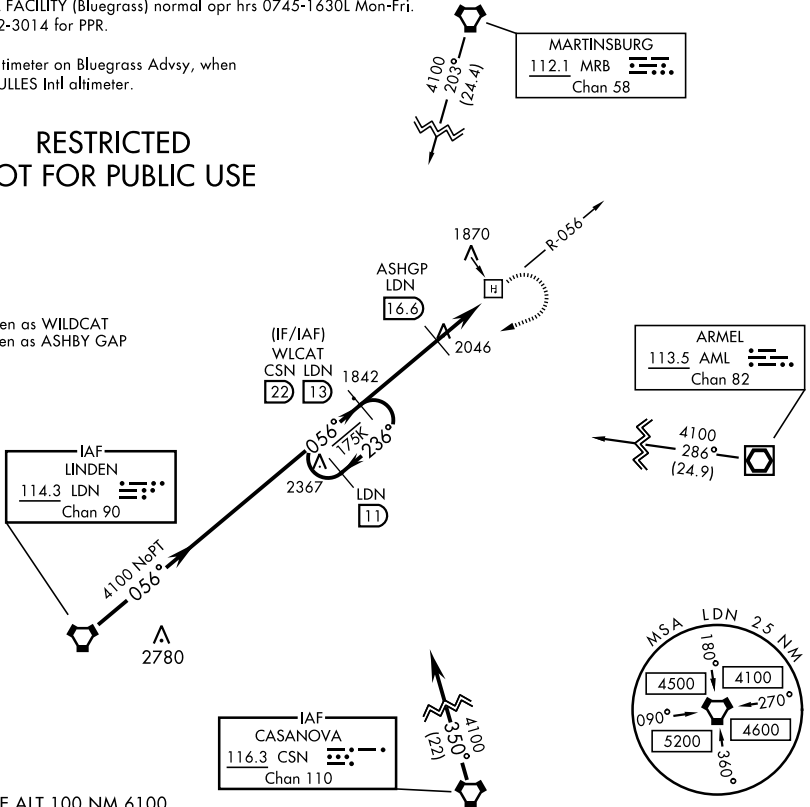
POTOMAC APP CON <b>120.45 306.925</b>	BLUEGRASS ADVISORY ★ <b>126.2 241.0</b>
--	--

FEMA SPECIAL FACILITY (Bluegrass) normal opr hrs 0745-1630L Mon-Fri.  
Phone 540-542-3014 for PPR.

Obtain local altimeter on Bluegrass Advsy, when not rcvd use DULLES Intl altimeter.

## RESTRICTED NOT FOR PUBLIC USE

WLCAT - spoken as WILDCAT  
ASHGP - spoken as ASHBY GAP



EMERG SAFE ALT 100 NM 6100

LDN 11	WLCAT CSN LDN 22 13	ASHGP LDN 16.6	IROXE LDN 19.3	ELEV 1707	TDZE 1707
CATEGORY	COPTER				
H-056	2440-1 733 (800-1)				
DULLES INTL ALTIMETER SETTING					
H-056	2680-1¼ 973 (1000-1¼)				

# COPTER VOR/DME or TACAN 056°

NE-3, 15 MAY 2025 to 12 JUN 2025

NE-3, 15 MAY 2025 to 12 JUN 2025