

BLUEMONT, VIRGINIA

# COPTER RNAV (GPS) 037°

22251

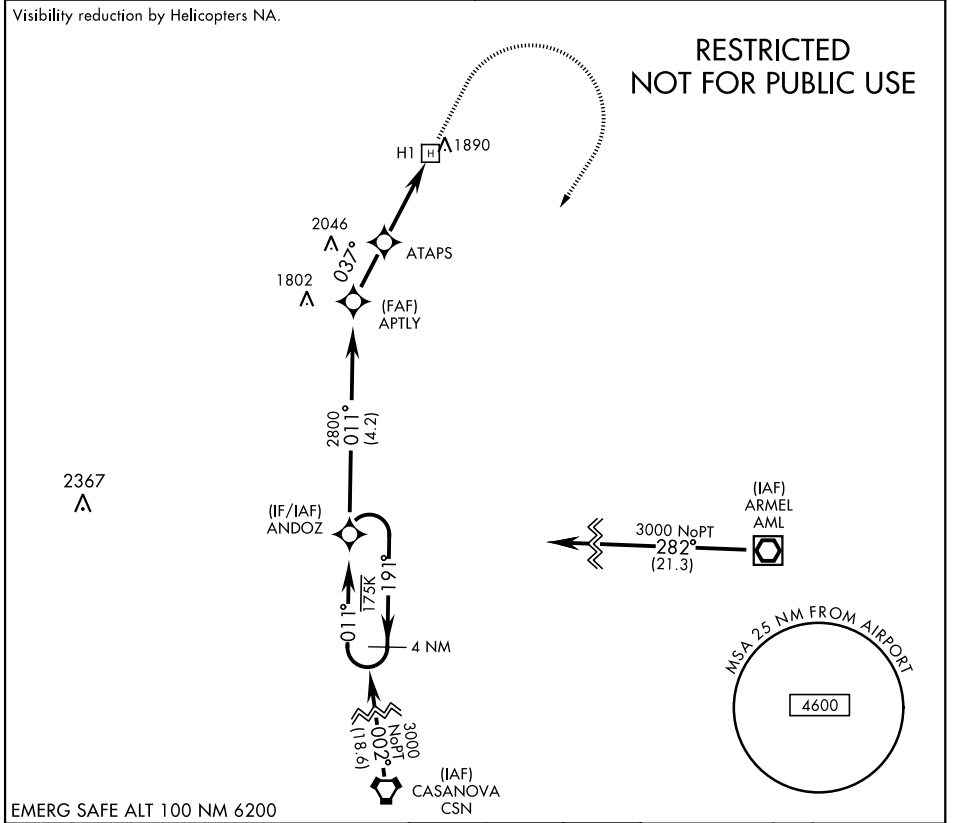
APCH CRS	Rwy Idg	50
037°	TDZE	1707
	Arprt Elev	1707

AL-11678 [USN]

BLUEGRASS (9VA5)

RNP APCH	MISSED APPROACH: Climb to 2700 then climbing right turn to 3000 direct ANDOZ and hold.
<p>▼ Obtain local altimeter on Bluegrass Advsy, when not rcvd use DULLES Intl altimeter. FEMA SPECIAL FACILITY (Bluegrass) normal opr 0745-1630L Mon-Fri. Phone 504-542-3014 for PPR.</p>	

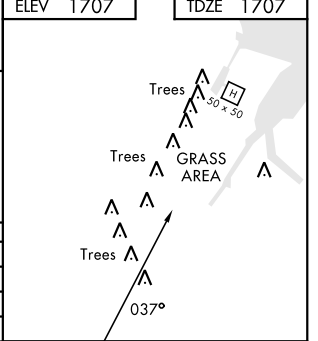
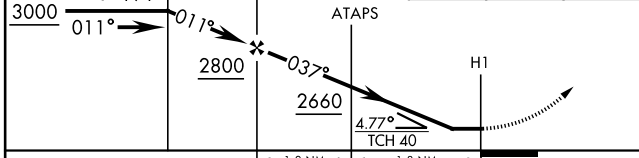
POTOMAC APP CON <b>120.45 306.925</b>	BLUEGRASS ADVISORY ★ <b>126.2 241.0</b>
--	--



## RESTRICTED NOT FOR PUBLIC USE

EMERG SAFE ALT 100 NM 6200

4 NM Holding Pattern	ANDOZ	2700	3000	ANDOZ	ELEV 1707	TDZE 1707
----------------------	-------	------	------	-------	-----------	-----------



CATEGORY	COPTER	
LNAY MDA	2220-1	513 (600-1)
WASHINGTON DULLES INTL ALTIMETER SETTING		
LNAY MDA	2460-1	753 (800-1)

BLUEMONT, VIRGINIA 39°04'N-77°53'W BLUEGRASS (9VA5)

Amdt 1 08SEP22

# COPTER RNAV (GPS) 037°

NE-3, 15 MAY 2025 to 12 JUN 2025

NE-3, 15 MAY 2025 to 12 JUN 2025