

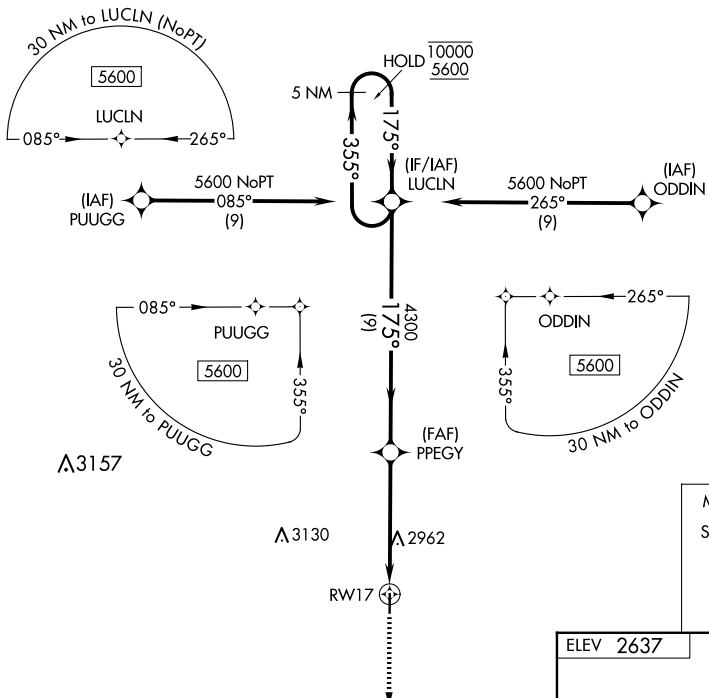
WAAS CH 81944 W17A	APP CRS 175°	Rwy Idg TDZE 2637 Apt Elev 2637	4000
--	------------------------	---	-------------

RNAV (GPS) RWY 17

GOVE COUNTY (1QK)

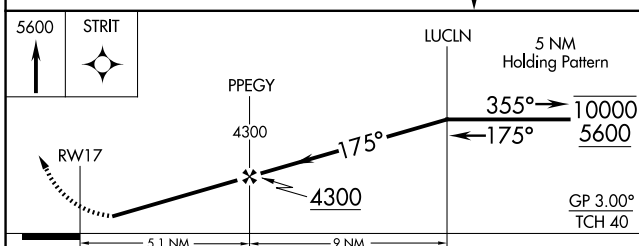
RNP APCH-GPS.	MISSED APPROACH: Climb to 5600 direct STRIT and hold.
<p>▼ Rwy 17 helicopter visibility reduction below 3/4 SM NA.</p> <p>▲ NA Baro-VNAV NA. Use Hill City altimeter setting.</p>	

HLC ASOS 118.425	DENVER CENTER 132.7 226.675	CTAF 122.90
----------------------------	---------------------------------------	-----------------------



NC-2, 15 MAY 2025 to 12 JUN 2025

NC-2, 15 MAY 2025 to 12 JUN 2025



ELEV 2637	TDZE 2637
<p>175° to RW17</p> <p>4000 x 60</p> <p>35</p> <p>0.6% UP</p>	
<p>MIRL Rwy 17-35</p>	

CATEGORY	A	B	C	D
LPV DA	3007-1	370 (400-1)		NA
LNAV/VNAV DA	3430-2½	793 (800-2½)		NA
LNAV MDA	3340-1	703 (800-1)		NA
CIRCLING	3340-1 703 (800-1)	3400-1 763 (800-1)		NA