

APP CRS	Rwy Idg	6064
177°	TDZE	1711
	Apt Elev	1711

RNAV (RNP) Z RWY 18

GREGORY M SIMMONS MEML (GZN)

RNP AR APCH - GPS.

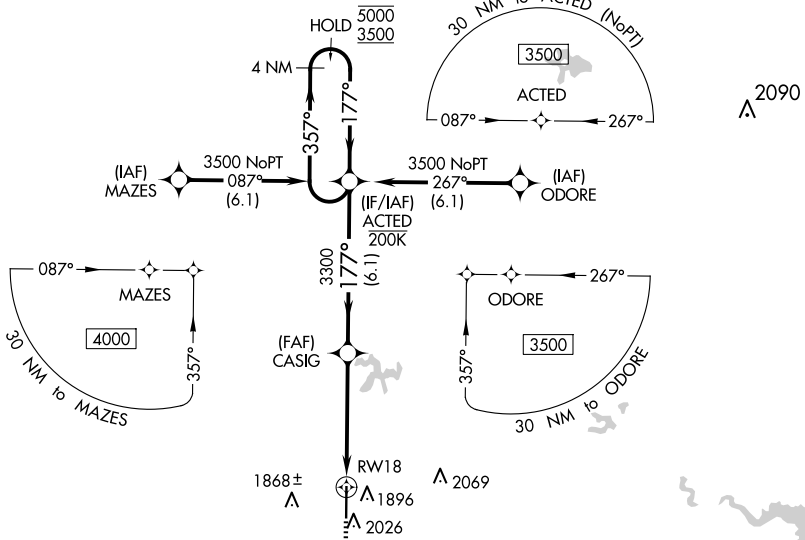
Procedure NA for aircraft with wingspan greater than 136 feet.
For uncomparted Baro-VNAV systems, procedure NA below -18°C or above 54°C.

MISSED APPROACH: Climb to 3700 direct GROFF and hold.

AWOS-4
118.0

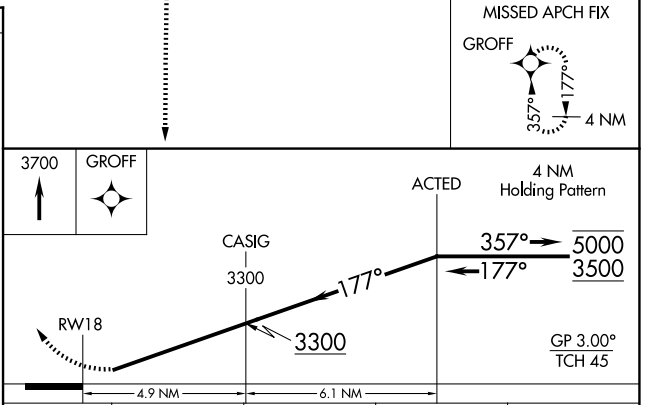
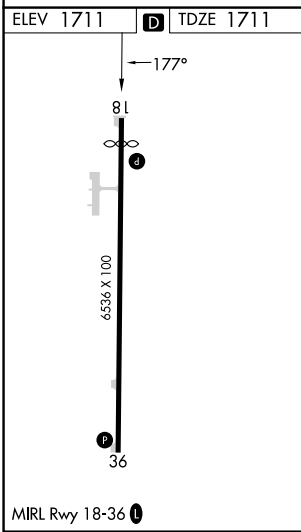
ABILENE APP CON
125.0 338.3

CTAF
122.9



SC-2, 15 MAY 2025 to 12 JUN 2025

SC-2, 15 MAY 2025 to 12 JUN 2025



CATEGORY	A	B	C	D
RNP 0.30 DA	1990-1	279 (300-1)		2011-1 300 (300-1)

AUTHORIZATION REQUIRED