

WAAS CH <b>52885</b> <b>W36A</b>	APP CRS <b>357°</b>	Rwy Idg TDZE <b>1711</b> Apt Elev <b>1711</b>	<b>6536</b>
--	------------------------	---	-------------

# RNAV (GPS) RWY 36

GREGORY M SIMMONS MEML (GZN)

RNP APCH - GPS.

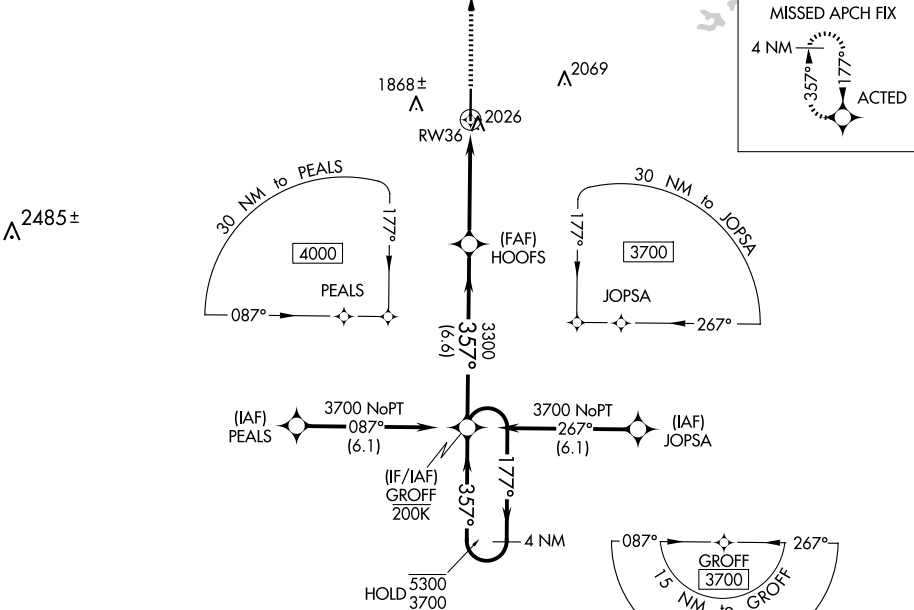
▼ Circling NA east of Rwy 18-36. Baro-VNAV NA when using Eastland altimeter setting. For uncompensated Baro-VNAV systems, LNAV/VNAV NA below -18°C or above 54°C. When local altimeter setting not received, use Eastland altimeter setting and increase LPV DA to 2023 feet; increase LNAV/VNAV DA to 2249 feet and all visibilities ½ SM. Increase all MDA<sub>s</sub> 80 feet and LNAV visibility Cat C/D ¼ SM, and Circling visibility Cat C ¼ SM. Rwy 36 helicopter visibility reduction below 1 SM NA.

MISSED APPROACH:  
Climb to 3500 direct  
ACTED and hold.

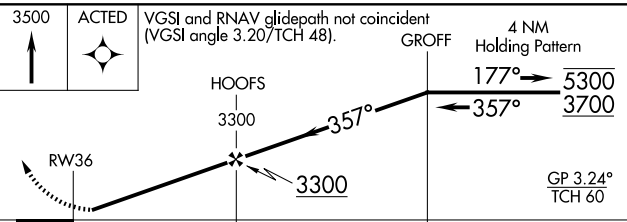
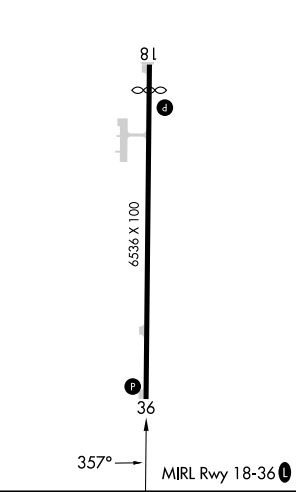
AWOS-4  
**118.0**

ABILENE APP CON  
**125.0 338.3**

CTAF  
**122.9**



ELEV 1711	<b>D</b>	TDZE 1711
-----------	----------	-----------



3500	ACTED	VGSi and RNAV glidepath not coincident (VGSi angle 3.20/TCH 48).		4 NM Holding Pattern
↑	✦	HOOFS	3300	357°
		RW36	3300	357°
			3000	357°
			3570	357°
			5300	357°
			3700	357°
			GP 3.24°	TCH 60
CATEGORY	A	B	C	D
LPV DA	1961-1		250 (300-1)	
LNAV/VNAV DA	2187-1½		476 (500-1½)	
LNAV MDA	2280-1	569 (600-1)	2280-1½	569 (600-1½)
CIRCLING	2280-1	569 (600-1)	2280-1½	2600-3 569 (600-1½) 889 (900-3)

SC-2, 15 MAY 2025 to 12 JUN 2025

SC-2, 15 MAY 2025 to 12 JUN 2025