

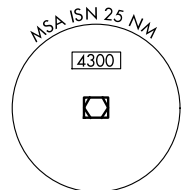
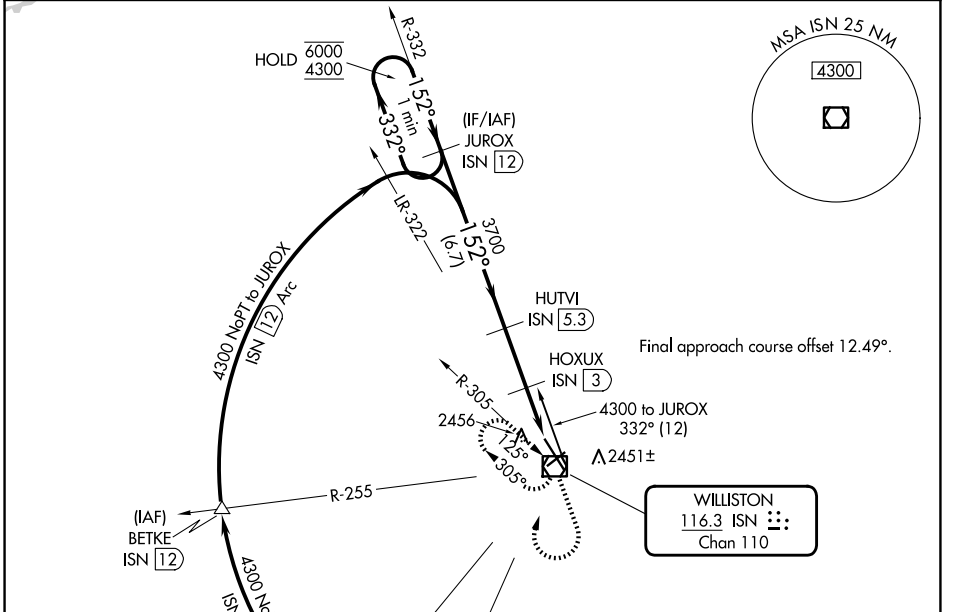
VOR/DME ISN 116.3 Chan 110	APP CRS 152°	Rwy Idg TDZE Apt Elev	7503 2318 2356
--	------------------------	-----------------------------	---

VOR RWY 14

WILLISTON BASIN INTL (XWA)

DME required. ▼ ▲	MISSED APPROACH: Climb to 4300 then climbing right turn to 4300 direct ISN VOR/DME and hold
-------------------------	---

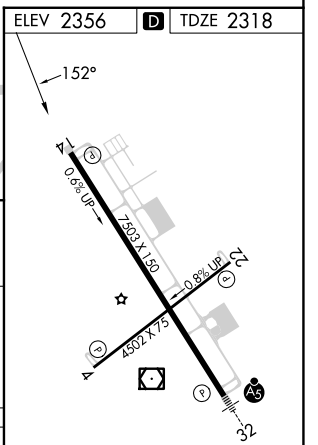
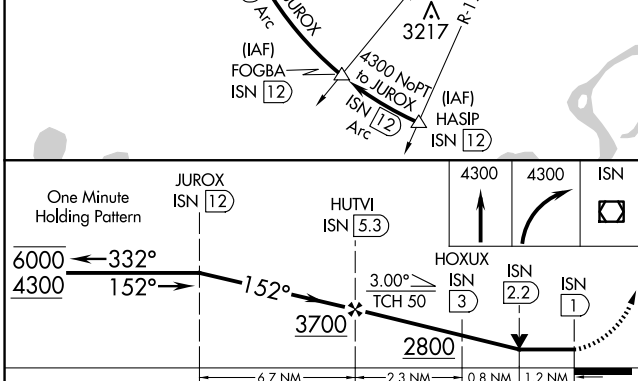
ASOS 125.925	SALT LAKE CITY CENTER 126.85 305.2	UNICOM 122.8 (CTAF) 0
------------------------	--	--



Final approach course offset 12.49°.

WILLISTON
116.3 ISN
Chan 110

ELEV 2356	D	TDZE 2318
-----------	---	-----------



CATEGORY	A	B	C	D
S-14	2720-1	402 (400-1)	2720-1½	402 (400-1½)
CIRCLING	2760-1 404 (500-1)	2820-1 464 (500-1)	2820-1½ 464 (500-1½)	2920-2 564 (600-2)

MIRL Rwy 4-22 **0**
HIRL Rwy 14-32 **0**
REIL Rwy 4, 14 and 22 **0**

NC-1, 15 MAY 2025 to 12 JUN 2025

NC-1, 15 MAY 2025 to 12 JUN 2025