

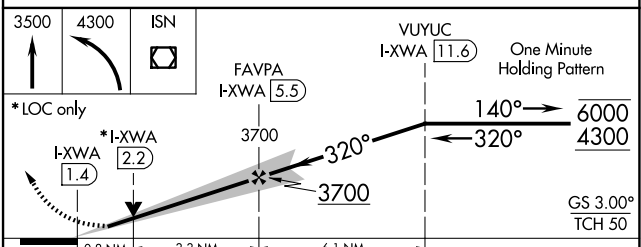
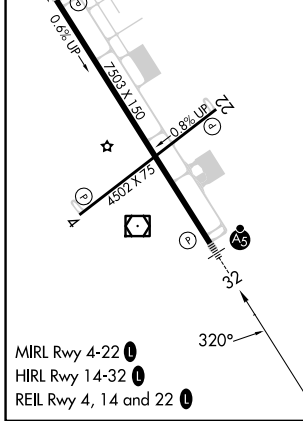
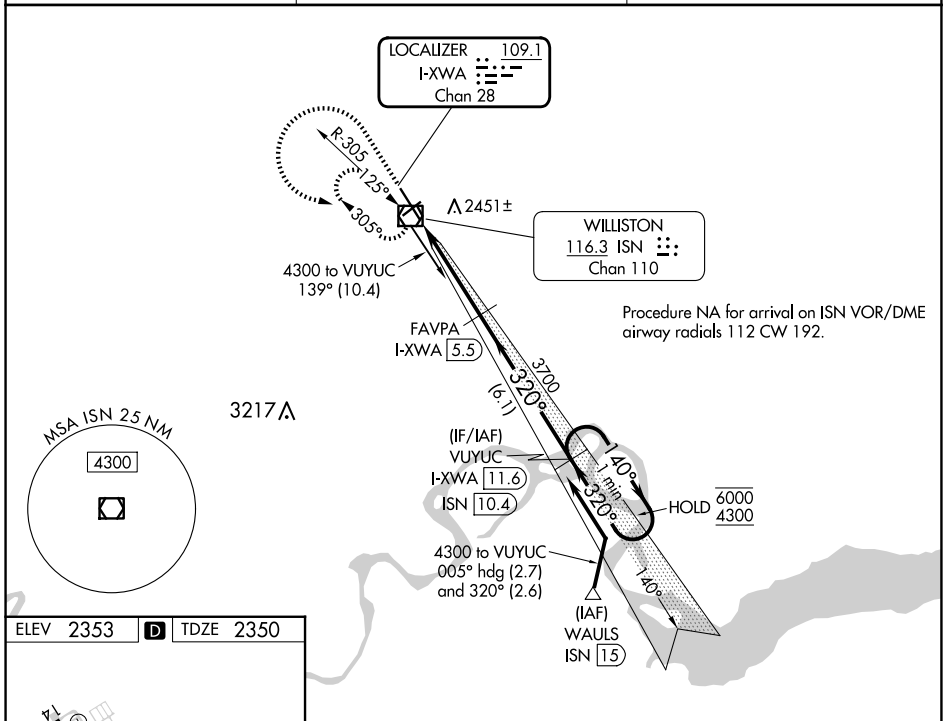
LOC/DME I-XWA 109.1 Chan 28	APP CRS 320°	Rwy ldg 7503 TDZE 2350 Apt Elev 2353
--	------------------------	---

ILS or LOC RWY 32

WILLISTON BASIN INTL (XWA)

DME required.	MALSR 	MISSED APPROACH: Climb to 3500 then climbing left turn to 4300 direct ISN VOR/DME and hold, continue climb-in-hold to 4300.
NA For inop ALS, increase S-LOC 32 Cat C/D visibility to 7/5 SM.		

ASOS 125.925	SALT LAKE CITY CENTER 126.85 305.2	UNICOM 122.8 (CTAF)
------------------------	--	-------------------------------



CATEGORY	A	B	C	D
S-ILS 32	2550-1/2		200 (200-1/2)	
S-LOC 32	2660-1/2		310 (400-1/2)	
CIRCLING	2760-1 407 (500-1)	2820-1 467 (500-1)	2820-1 1/2 467 (500-1 1/2)	2920-2 567 (600-2)

NC-1, 15 MAY 2025 to 12 JUN 2025

NC-1, 15 MAY 2025 to 12 JUN 2025