

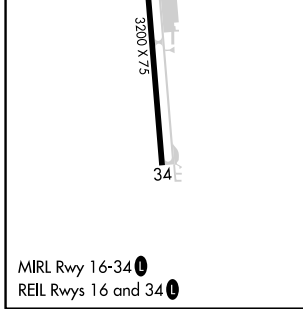
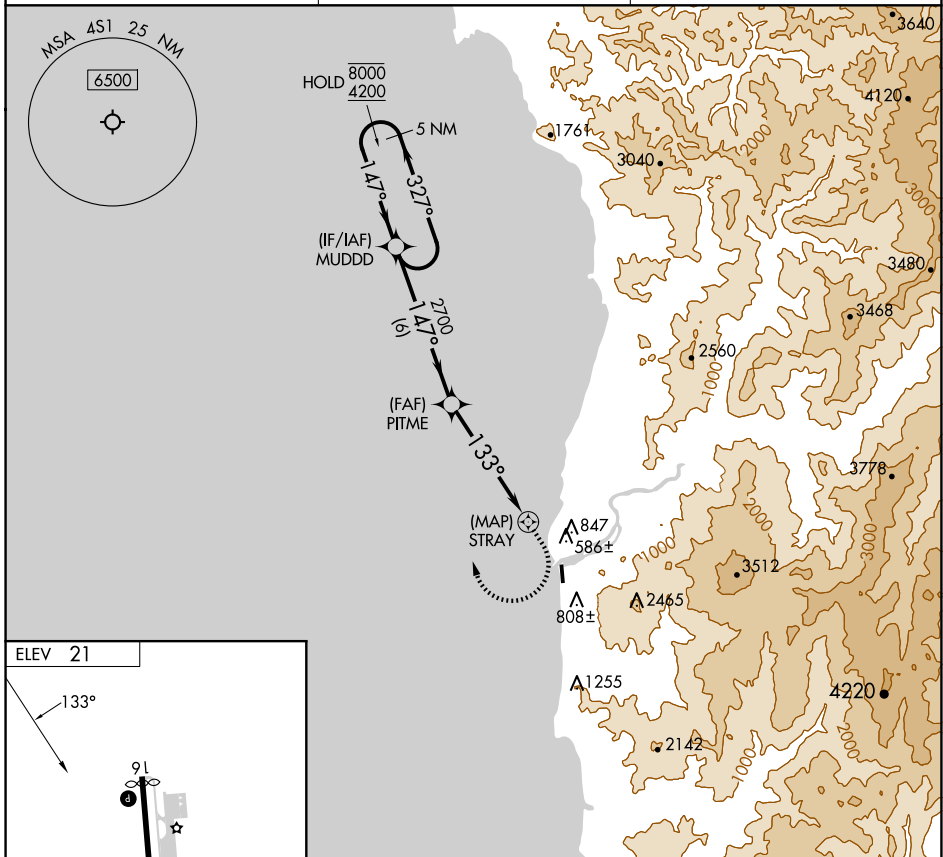
APP CRS	Rwy Idg	N/A
133°	TDZE	N/A
	Apt Elev	21

RNAV (GPS)-A

GOLD BEACH MUNI (4S1)

RNP APCH-GPS.	MISSED APPROACH: Climb to 2100 then climbing right turn to 4200 direct MUDDD and hold.
<p>▼ Circling NA east of Rwy 16-34.</p> <p>▲ Procedure NA at night.</p>	

AWOS-3 118.15	SEATTLE CENTER 127.55 254.35	UNICOM 122.8 (CTAF) 0
-------------------------	--	---------------------------------



	MUDDD	2100	4200	MUDDD
	5 NM Holding Pattern	↑	↷	✦
	8000 ← 327°			
	4200 → 147°			
			PITME	
			2700	
			↘ 133°	STRAY
			6 NM	5 NM
CATEGORY	A	B	C	D
CIRCLING	1740-2½	1719 (1800-2½)	1740-3	NA
			1719 (1800-3)	

NW-1, 15 MAY 2025 to 12 JUN 2025

NW-1, 15 MAY 2025 to 12 JUN 2025