

WAAS CH <b>90537</b> <b>W03A</b>	APP CRS <b>032°</b>	Rwy Idg TDZE Apt Elev	<b>5598</b> <b>5157</b> <b>5193</b>
--	------------------------	-----------------------------	---

# RNAV (GPS) RWY 3

BLAKE FLD (AJZ)

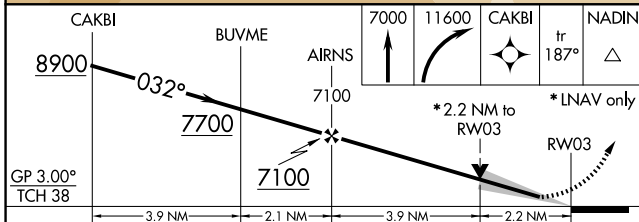
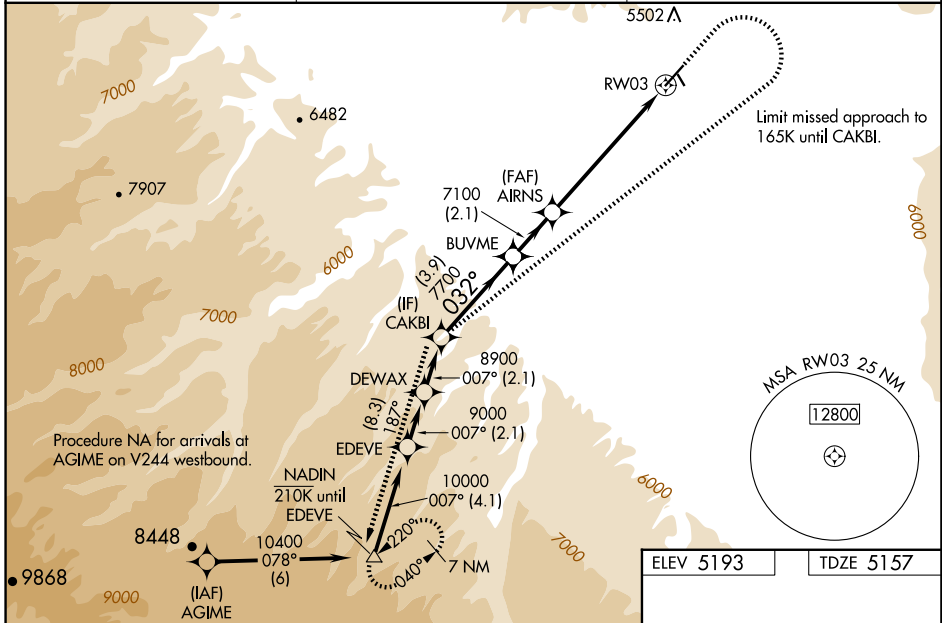
**RNP APCH.**

▼ Baro-VNAV NA when using Montrose altimeter setting. For uncompensated Baro-VNAV systems, procedure NA below -25°C or above 54°C. When local altimeter setting not received, use Montrose altimeter setting: increase #LPV DA to 5529 feet and visibility all Cats 3/8 SM, increase LPV DA to 5670 feet and visibility all Cats 1/2 SM, increase LNAV/VNAV DA to 5979 feet and visibility all Cats 1/2 SM. Increase all MDA 140 feet and visibility Cat B 1/4 SM, Cat C 1/2 SM and Circling Cat A 1/4 SM. VDP NA when using Montrose altimeter setting. Circling NA to Rwy's 14 and 32.

# Missed approach requires minimum climb of 250 feet per NM to 6900.

**MISSED APPROACH:** Climb to 7000 then climbing right turn to 11600 direct CAKBI and on track 187° to NADIN and hold, continue climb-in-hold to 11600.

AWOS-3 <b>134.0</b>	DENVER CENTER <b>127.1 343.65</b>	UNICOM <b>122.8 (CTAF) 0</b>
------------------------	--------------------------------------	---------------------------------



CATEGORY	A	B	C	D
#LPV DA	5407-1	250 (300-1)		NA
LPV DA	5548-1½	391 (400-1½)		NA
LNAV/VNAV DA	5857-2	700 (700-2)		NA
LNAV MDA	5840-1	683 (700-1)	5840-2 683 (700-2)	NA
<b>C</b> CIRCLING	5900-1 707 (800-1)	6340-1½ 1147 (1200-1½)	6680-3 1487 (1500-3)	NA

ELEV 5193	TDZE 5157
-----------	-----------

MIRL Rwy 3-21 0  
REIL Rwy's 3 and 21 0

SW-1, 15 MAY 2025 to 12 JUN 2025

SW-1, 15 MAY 2025 to 12 JUN 2025