

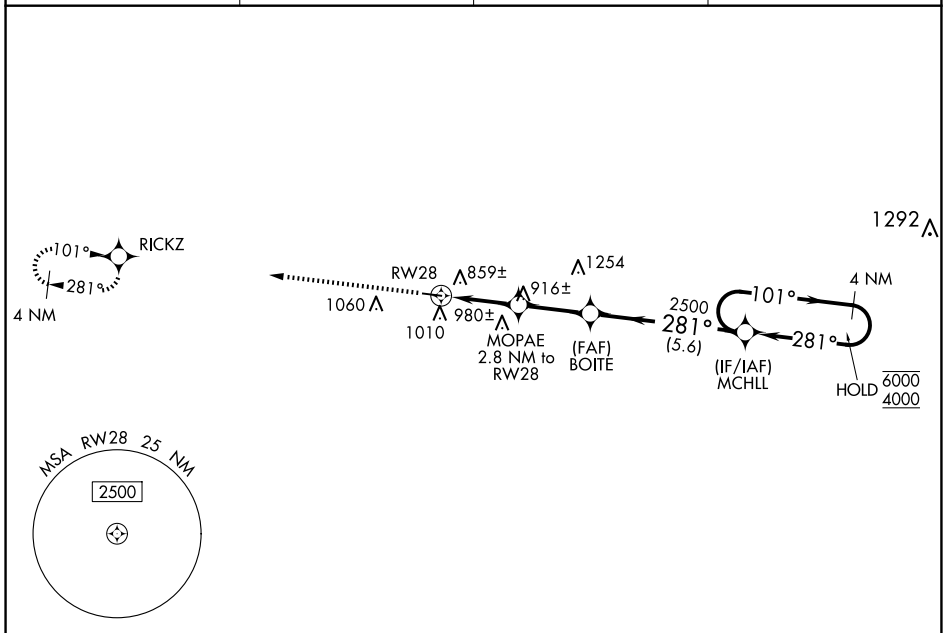
WAAS CH 77842 W28A	APP CRS 281°	Rwy Idg TDZE Apt Elev	4000 732 732
--	------------------------	-----------------------------	---

RNAV (GPS) RWY 28

BRECKINRIDGE COUNTY (I93)

RNP APCH.	Baro-VNAV NA. Use Fort Knox altimeter setting, when not received, use Elizabethtown altimeter setting and increase LPV DA to 1047, LNAV/VNAV DA to 1185 and all MDA 20 feet.	MISSED APPROACH: Climb to 4000 direct RICKZ and hold, continue climb-in-hold to 4000.
-----------	--	---

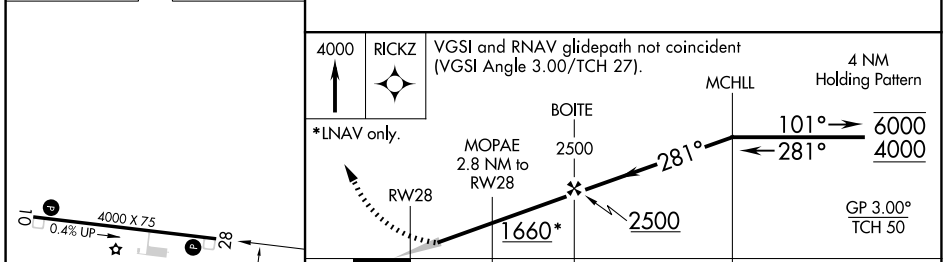
AWOS-3PT 123.625	KFTK ATIS ★ 109.6	LOUISVILLE APP CON 132.075 327.0	CTAF 122.9 0
----------------------------	-----------------------------	--	------------------------



SE-1, 15 MAY 2025 to 12 JUN 2025

SE-1, 15 MAY 2025 to 12 JUN 2025

ELEV 732	TDZE 732
----------	----------



CATEGORY	A	B	C	D
LPV DA		1040-1	308 (400-1)	
LNAV/VNAV DA		1178-1 ³ / ₈	446 (500-1 ³ / ₈)	
LNAV MDA	1180-1	448 (500-1)	1180-1 ³ / ₈	448 (500-1 ³ / ₈)
<input checked="" type="checkbox"/> CIRCLING	1380-1 648 (700-1)	1480-1 748 (800-1)	1480-2 ¹ / ₄ 748 (800-2 ¹ / ₄)	1480-2 ¹ / ₂ 748 (800-2 ¹ / ₂)

MIRL Rwy 10-28 0
REIL Rwy 10 and 28 0