

APP CRS	Rwy Idg	N/A
264°	TDZE	N/A
	Apt Elev	720

RNAV (GPS)-A

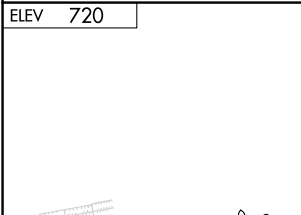
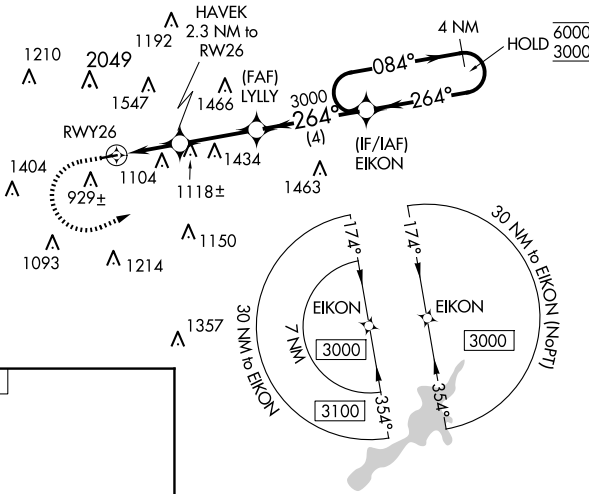
MORAINE AIR PARK (I73)

RNP APCH - GPS.		MISSED APPROACH: Climb to 1500 then climbing left turn to 3000 direct EIKON and hold.
▼	Procedure NA at night.	
▲	NA	Rwy 8 and 26 helicopter visibility reduction below 1 SM NA. Use Dayton-Wright Brothers altimeter setting.

MGY ASOS 118.375	COLUMBUS APP CON 118.85 269.275	UNICOM 122.7 (CTAF)
----------------------------	---	-------------------------------

EC-2, 15 MAY 2025 to 12 JUN 2025

EC-2, 15 MAY 2025 to 12 JUN 2025



	1500	3000	EIKON	4 NM Holding Pattern
	2.3 NM	2.8 NM	4 NM	
CATEGORY	A	B	C	D
☑ CIRCLING	1440-1 720 (800-1)	1520-1 800 (800-1)	NA	

MIRL Rwy 8-26