

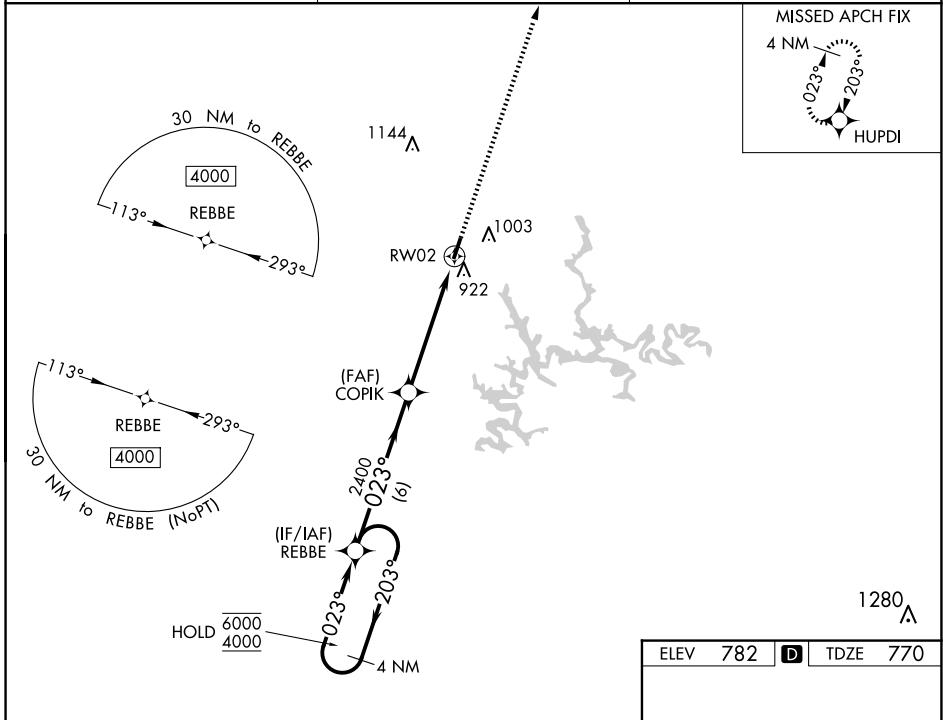
WAAS CH 69542 W02A	APP CRS 023°	Rwy Idg 3800 TDZE 770 Apt Elev 782
--	------------------------	---

RNAV (GPS) RWY 2

LEITCHFIELD-GRAYSON COUNTY (M20)

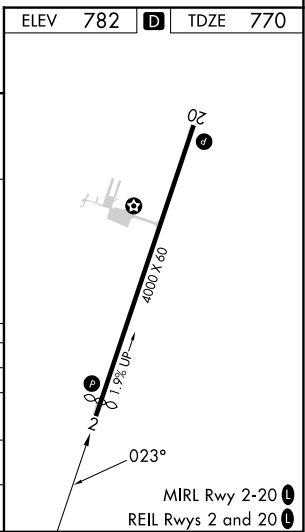
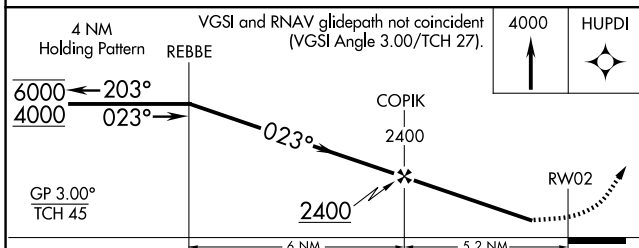
RNP APCH.	<p>⚠ Circling Rwy 20 NA at night. Rwy 2 helicopter visibility reduction below 3/4 SM NA. Baro-VNAV NA. ⚠ NA Use Elizabethtown altimeter setting.</p>	<p>MISSED APPROACH: Climb to 4000 direct HUPDI and hold, continue climb-in-hold to 4000.</p>
-----------	--	--

EKX AWOS-3 121.025	INDIANAPOLIS CENTER 121.175 353.65	UNICOM 123.0 (CTAF) 0
------------------------------	--	---------------------------------



SE-1, 15 MAY 2025 to 12 JUN 2025

SE-1, 15 MAY 2025 to 12 JUN 2025



CATEGORY	A	B	C	D
LPV DA	1140-1	370 (400-1)		NA
LNAV/VNAV DA	1308-1½	538 (600-1½)		NA
LNAV MDA	1240-1	470 (500-1)	1240-1⅜ 470 (500-1⅜)	NA
CIRCLING	1380-1	598 (600-1)	1380-1½ 598 (600-1½)	NA