

WAAS CH 65742 W10A	APP CRS 124°	Rwy Idg TDZE Apt Elev 5728 5932 5933
--	------------------------	--

RNAV (GPS) RWY 10

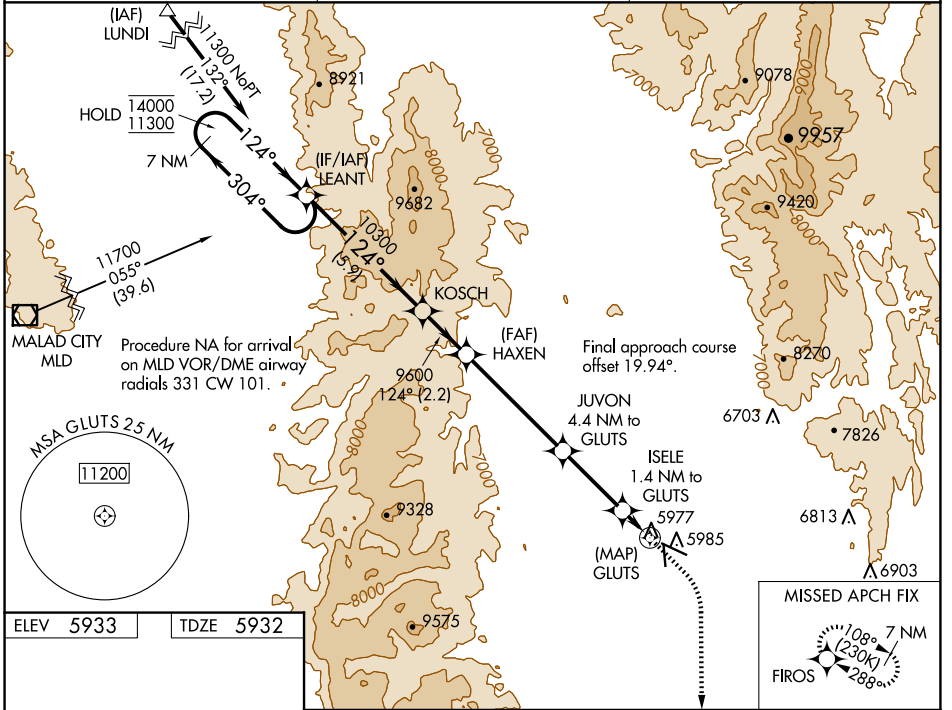
BEAR LAKE COUNTY (1U7)

RNP APCH - GPS.

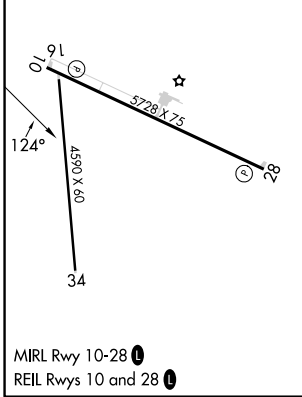
▽
▲
☁ -23°C

MISSED APPROACH: (Do not exceed 185K until FIROs)
Climb to 6340 then climbing right turn to 11000 direct FIROs and hold.

AWOS-3 118.525	SALT LAKE CENTER 128.35 239.25	UNICOM 122.8 (CTAF) 1
--------------------------	--	---------------------------------



ELEV 5933	TDZE 5932
-----------	-----------



7 NM Holding Pattern	LEANT	KOSCH	HAXEN	JUVON	ISELE	GLUTS	FIROS
14000 ← 304°	10300	9600	7780	6660	6660	6660	6340 11000 FIROs
	5.9 NM	2.2 NM	4.9 NM	3 NM	1.4 NM	0.5 NM	

CATEGORY	A	B	C	D
LP MDA		6240-1	308 (400-1)	
LNAV MDA		6240-1	308 (400-1)	
C CIRCLING	6320-1 387 (400-1)	6440-1 507 (600-1)	6720-2¼ 787 (800-2¼)	7140-3 1207 (1300-3)

NW-1, 15 MAY 2025 to 12 JUN 2025

NW-1, 15 MAY 2025 to 12 JUN 2025