

WAAS CH <b>58036</b> <b>W12A</b>	APP CRS <b>115°</b>	Rwy Idg <b>3550</b> TDZE <b>1650</b> Apt Elev <b>1650</b>
--	------------------------	---

# RNAV (GPS) RWY 12

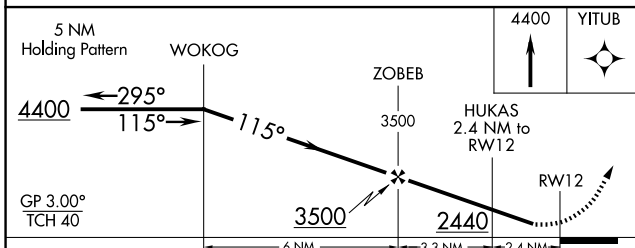
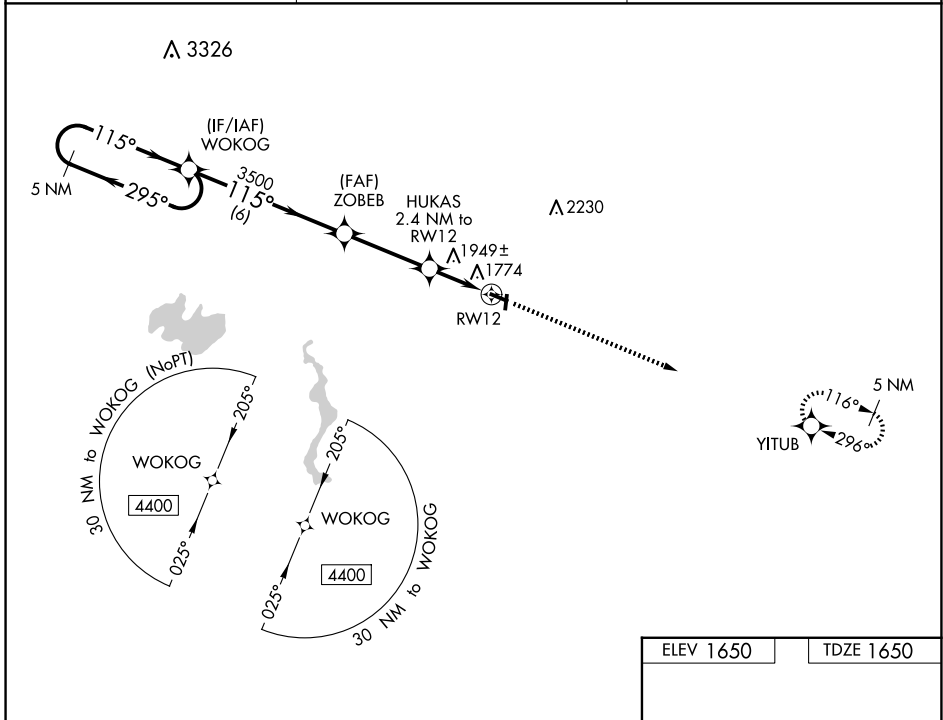
CRANDON/STEVE CONWAY MUNI (Y55)

RNP APCH - GPS

▼ Baro-VNAV NA. Use Rhineland altimeter setting, when not received, use Eagle River altimeter setting and increase LPV DA to 2063 feet; increase LNAV/VNAV DA to 2359 feet; increase all MDAs 20 feet. Rwy 12 helicopter visibility reduction below 3/4 SM NA. Circling to Rws 1, 19 NA.

▲ NA MISSED APPROACH: Climb to 4400 direct YITUB and hold.

RHI ASOS <b>126.825</b>	MINNEAPOLIS CENTER <b>133.65 281.5</b>	CTAF <b>122.9 0</b>
----------------------------	---	------------------------



ELEV 1650	TDZE 1650
-----------	-----------

Vertical profile diagram showing glide path angles of 0.4% and 0.6% up, and a 30-degree climb to 61 feet. A 3550 X 75 glide slope is also indicated.

CATEGORY	A	B	C	D
LPV DA	2056-1 1/8		406 (500-1 1/8)	NA
LNAV/VNAV DA	2352-2		702 (800-2)	NA
LNAV MDA	2260-1	610 (700-1)	2260-1 3/4 610 (700-1 3/4)	NA
CIRCLING	2300-1 650 (700-1)	2340-1 690 (700-1)	2360-2 710 (800-2)	NA

EC-3, 15 MAY 2025 to 12 JUN 2025

EC-3, 15 MAY 2025 to 12 JUN 2025