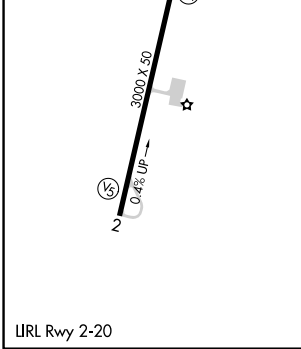
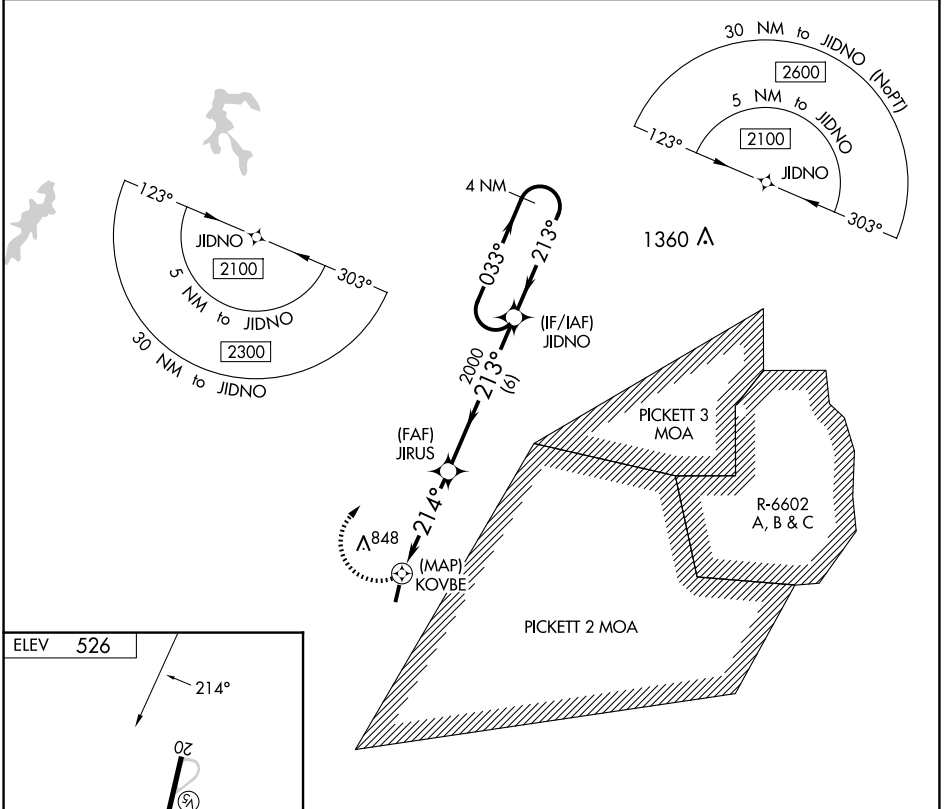


APP CRS 214°	Rwy Idg TDZE Apt Elev	N/A N/A 526
------------------------	-----------------------------	--

RNAV (GPS)-B

LUNENBURG COUNTY (W31)

<p>⚠ Helicopter visibility reduction below 1 SM NA. DME/DME RNP-0.3 NA. Procedure NA at night. When local altimeter setting not received, use Blackstone altimeter setting and increase all MDA 60 feet.</p>		<p>MISSED APPROACH: Climbing right turn to 2100 direct JIDNO and hold.</p>
<p>AWOS-3 123.875</p>	<p>WASHINGTON CENTER 118.75 377.1</p>	<p>UNICOM 122.7 (CTAF)</p>



2100	JIDNO	4 NM Holding Pattern		
JIRUS	JIDNO	2100		
KOVBE	2000	213°		
0.5	4 NM	6 NM		
CATEGORY	A	B	C	D
C CIRCLING	1540-3	1014 (1100-3)	NA	

NE-3, 15 MAY 2025 to 12 JUN 2025

NE-3, 15 MAY 2025 to 12 JUN 2025