

APP CRS	Rwy Idg	N/A
<b>034°</b>	TDZE	N/A
	Apt Elev	<b>526</b>

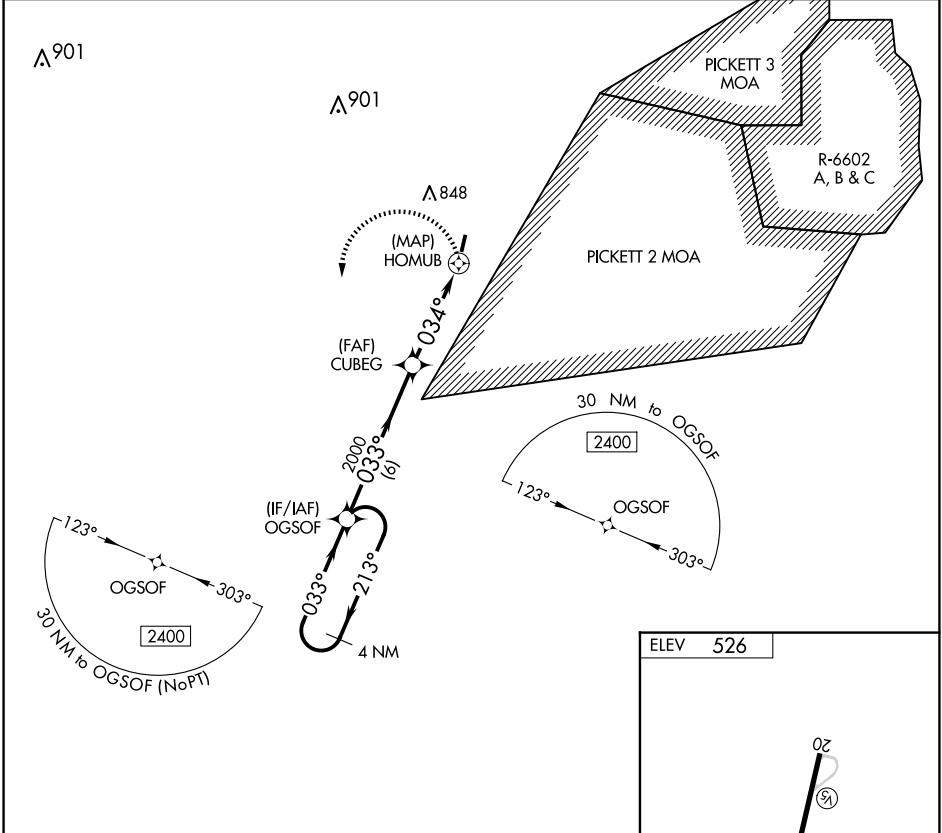
# RNAV (GPS)-A

LUNENBURG COUNTY (W31)

**▼** Helicopter visibility reduction below 1 SM NA.  
**▲** DME/DME RNP-0.3 NA. Procedure NA at night.  
 When local altimeter setting not received, use Blackstone altimeter setting and increase all MDA 60 feet.

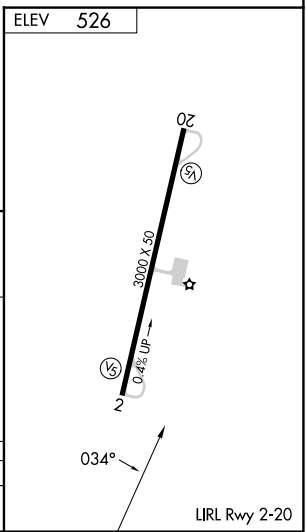
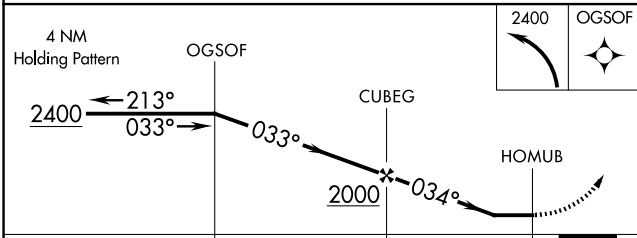
**MISSED APPROACH:** Climbing left turn to 2400 direct OGSOF and hold.

AWOS-3 <b>123.875</b>	WASHINGTON CENTER <b>118.75 377.1</b>	UNICOM <b>122.7 (CTAF)</b>
--------------------------	--	-------------------------------



NE-3, 15 MAY 2025 to 12 JUN 2025

NE-3, 15 MAY 2025 to 12 JUN 2025



CATEGORY	A	B	C	D
<b>CIRCLING</b>	1000-1 474 (500-1)	1080-1 554 (600-1)	NA	