

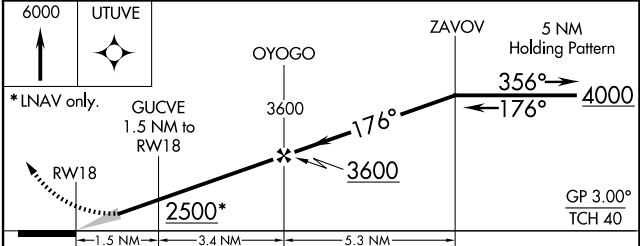
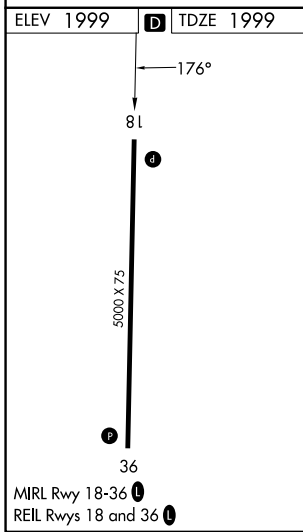
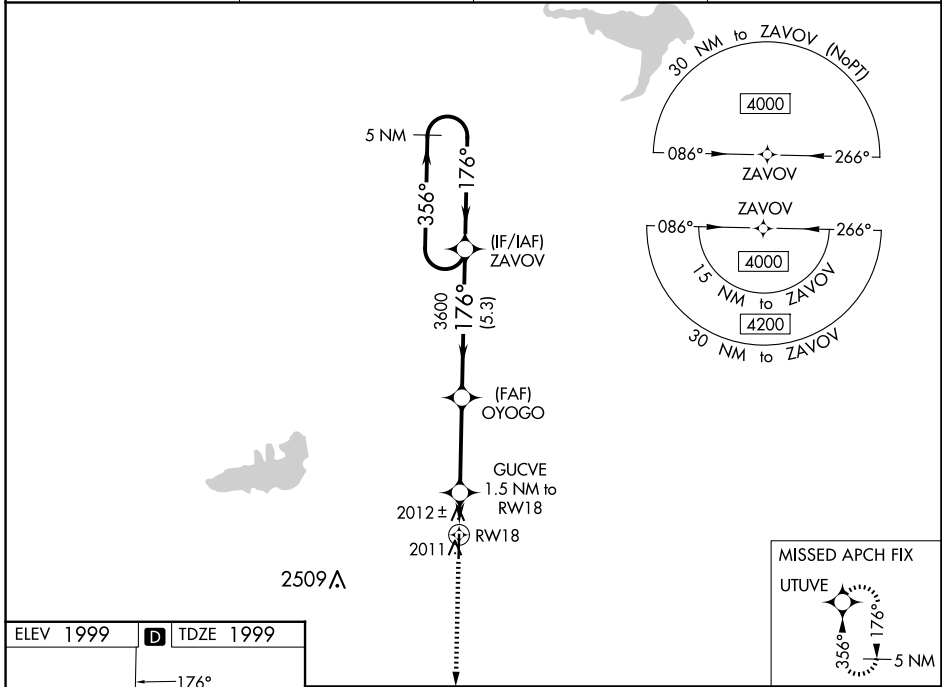
WAAS CH 82432 W18A	APP CRS 176°	Rwy Idg TDZE Apt Elev	5000 1999 1999
--	------------------------	-----------------------------	---

RNAV (GPS) RWY 18

ROOKS COUNTY RGNL (RCP)

<p>▽ ▲ NA Baro-VNAV NA. Use Hill City altimeter setting; when not received, use Hays altimeter setting. Circling NA west of Rwy 18-36. DME/DME RNP-0.3 NA.</p>	<p>MISSED APPROACH: Climb to 6000 direct UTUVE and hold, continue climb-in-hold to 6000.</p>
--	--

AWOS-AV 120.075	HLC ASOS 118.425	DENVER CENTER 132.7 226.675	CTAF 122.9 📍
---------------------------	----------------------------	---------------------------------------	-------------------------------



CATEGORY	A	B	C	D
LPV DA	2290-1 291 (300-1)			NA
LNAV/VNAV DA	2340-1½ 341 (400-1½)			NA
LNAV MDA	2360-1 361 (400-1)			NA
C CIRCLING	2460-1 461 (500-1)	2480-1 481 (500-1)	2500-1½ 501 (600-1½)	NA

NC-2, 15 MAY 2025 to 12 JUN 2025

NC-2, 15 MAY 2025 to 12 JUN 2025