

WAAS CH <b>70739</b> <b>W14A</b>	APP CRS <b>146°</b>	Rwy Idg TDZE Apt Elev	<b>3397</b> <b>1232</b> <b>1240</b>
--	------------------------	-----------------------------	---

# RNAV (GPS) RWY 14

LIBSON MUNI (6L3)

RNP APCH - GPS.

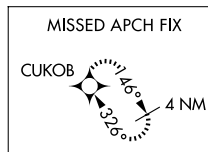
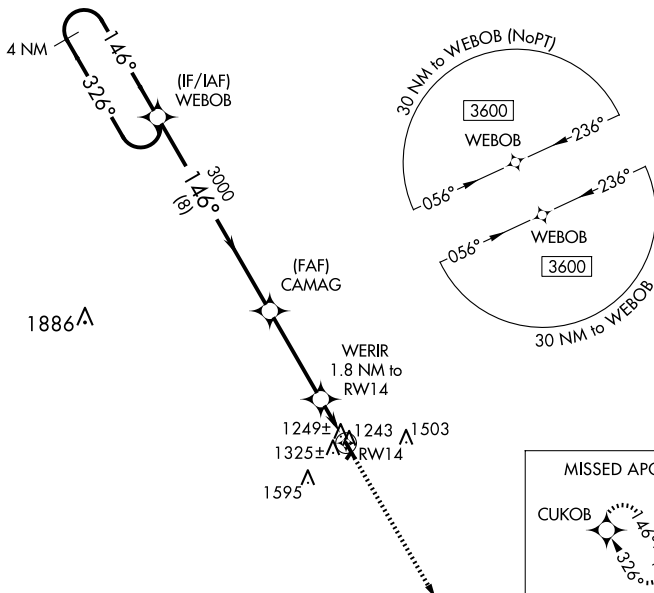
**NA** Circling NA to Rwy 3 and 21. Rwy 14 helicopter visibility reduction below 1 SM NA. Use Gwinner altimeter setting; when not received, use Valley City altimeter setting and increase all MDAs 80 feet. Straight-In Rwy 14 NA at night. Circling Rwy 14 NA at night.

MISSED APPROACH: Climb to 3600 direct CUKOB and hold.

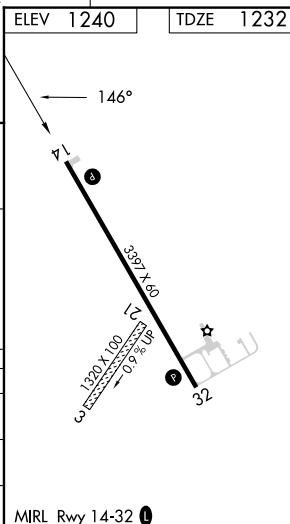
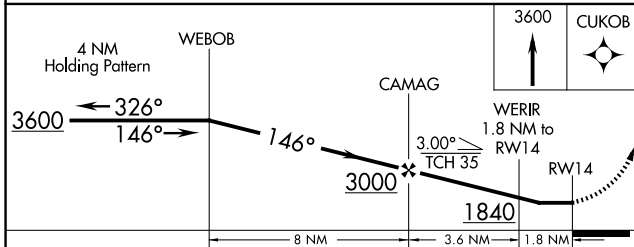
GWR AWOS-3  
**118.325**

MINNEAPOLIS CENTER  
**127.35 278.3**

CTAF  
**122.9**



ELEV 1240	TDZE 1232
-----------	-----------



CATEGORY	A	B	C	D
LP MDA	1580-1	348 (400-1)		NA
LNAV MDA	1620-1	388 (400-1)		NA
<b>CIRCLING</b>	1740-1 500 (500-1)	1940-1 700 (700-1)		NA

MIRL Rwy 14-32

NC-1, 15 MAY 2025 to 12 JUN 2025

NC-1, 15 MAY 2025 to 12 JUN 2025