

APP CRS	Rwy ldg	<b>3189</b>
<b>195°</b>	TDZE	<b>539</b>
	Apt Elev	<b>539</b>

# RNAV (GPS) RWY 19

SALUDA COUNTY (6J4)

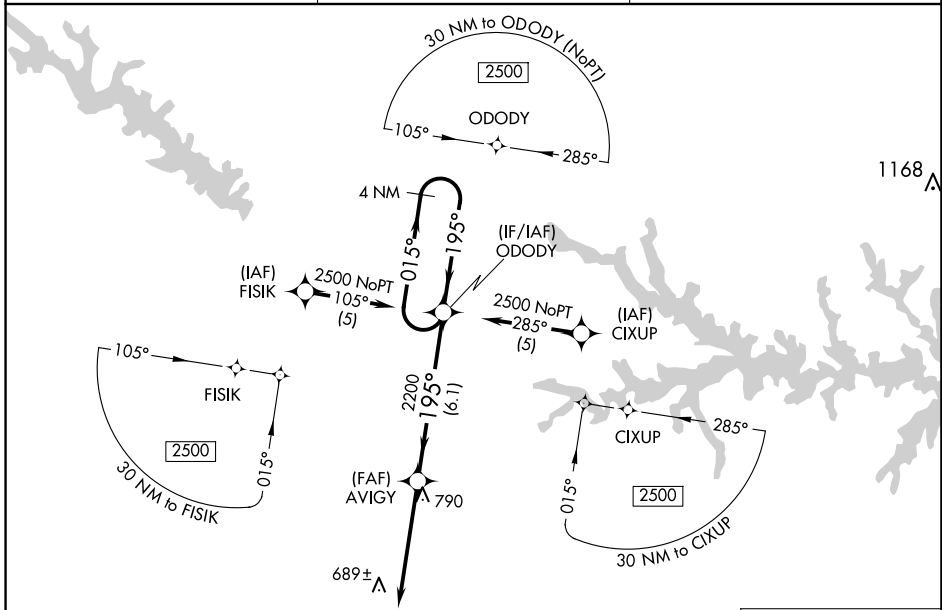
**NA** DME/DME RNP-0.3 NA. Procedure NA at night. Visibility reduction by helicopters NA. Use Aiken altimeter setting, when not received, use Augusta Rgnl altimeter setting and increase all MDA's 100 feet, increase LNAV Cat C visibility ¼ SM and Circling Cat C visibility ½ SM.

**MISSED APPROACH:** Climb to 2500 direct FONLU and hold.

AIK AWOS-3  
**118.025**

AUGUSTA APP CON ★  
**119.15**

CTAF  
**122.9**



SE-2, 15 MAY 2025 to 12 JUN 2025

SE-2, 15 MAY 2025 to 12 JUN 2025

ELEV 539	TDZE 539
----------	----------

