

WAAS CH 62928 W28A	APP CRS 280°	Rwy Idg TDZE 928 Apt Elev 928	4549
--	------------------------	---	-------------

RNAV (GPS) RWY 28

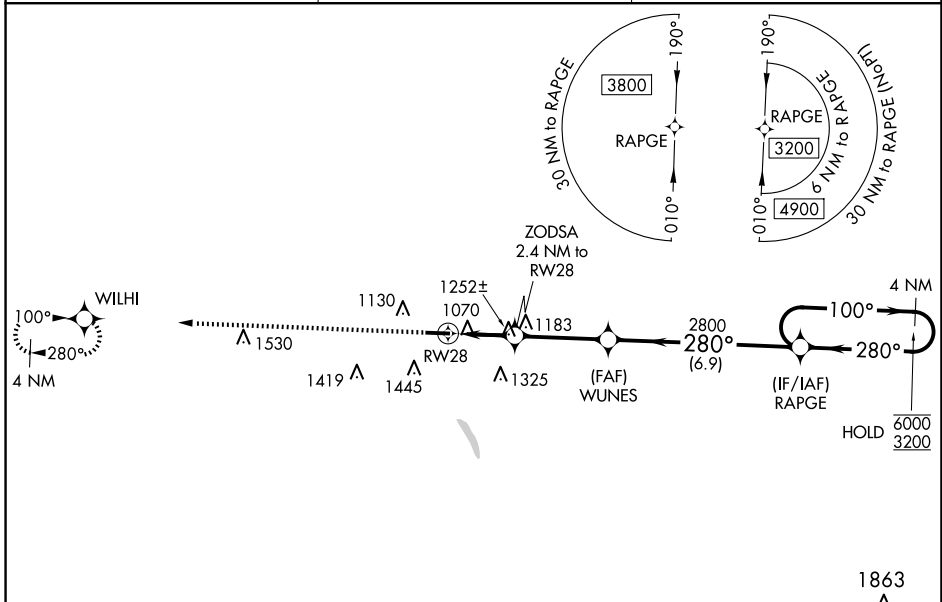
BOGGS FLD (USW)

RNP APCH.

▼ Rwy 28 helicopter visibility reduction below 1 SM NA. Rwy 28 Straight-in and Circling minimums NA at night. When local altimeter setting not received, use Charleston altimeter setting and increase all MDA's 80 feet, LP and LNAV Cats C and D visibility 1/8 SM and Circling Cats C and D visibility 1/4 SM. *1780 when using Charleston altimeter setting.

MISSED APPROACH:
Climb to 3500 direct WILHI and hold.

AWOS-3 118.575	CHARLESTON APP CON 124.1 269.125	UNICOM 122.725 (CTAF) 0
--------------------------	--	-----------------------------------



ELEV 928	TDZE 928
----------	----------

Visual Segment - Obstacles.

WUNES

ZODSA 2.4 NM to RW28

RW28

1720*

2800

2.4 NM | 3.4 NM | 6.9 NM

		WUNES		RAPGE		4 NM Holding Pattern	
		280°		280°		100° → 6000 ← 280° 3200	
CATEGORY		A	B	C	D		
LP MDA		1520-1	592 (600-1)	1520-1 3/4	592 (600-1 3/4)		
LNAV MDA		1520-1	592 (600-1)	1520-1 3/4	592 (600-1 3/4)		
CIRCLING		1560-1	1760-1 1/4	1760-2 1/2	1760-2 3/4		
		632 (700-1)	832 (900-1 1/4)	832 (900-2 1/2)	832 (900-2 3/4)		

NE-4, 15 MAY 2025 to 12 JUN 2025

NE-4, 15 MAY 2025 to 12 JUN 2025