


WAAS CH 72725 W20A	APP CRS 199°	Rwy Idg 5500 TDZE 144 Apt Elev 144
--	------------------------	---

RNAV (GPS) RWY 20

HALIFAX/NORTHAMPTON RGNL (IXA)

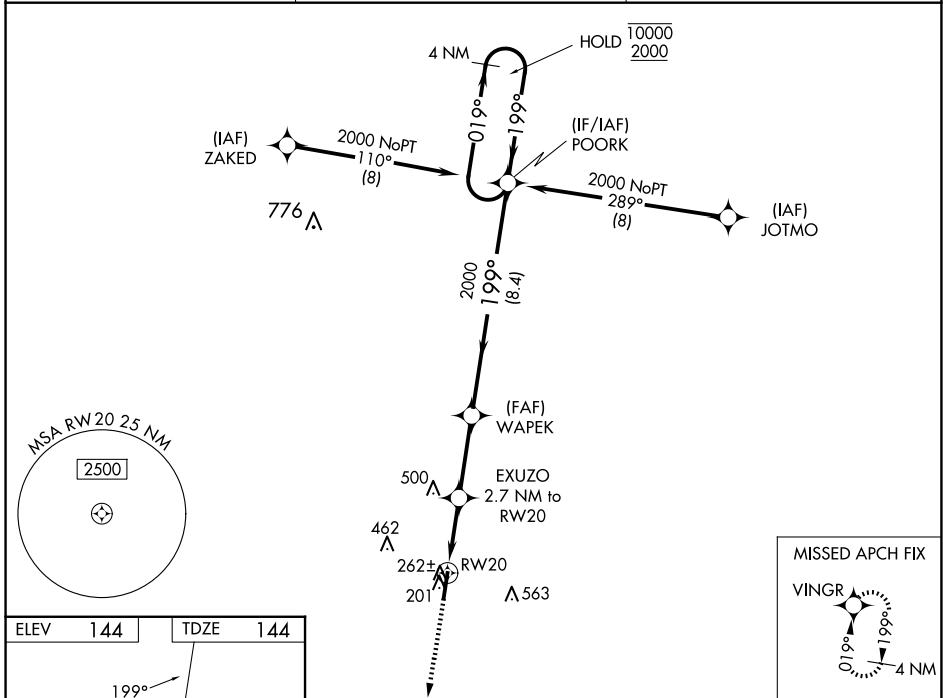
RNP APCH-GPS.

⚠ Circling NA east of Rwy 2-20. Rwy 20 helicopter visibility reduction below 3/4 SM NA. Inop table does not apply to LPV. For uncompensated Baro-VNAV systems, LNAV/VNAV NA below -1.5°C or above 54°C. For inop ALS increase LNAV/VNAV visibility all Cats to 3/8 SM and LNAV visibility all Cats to 1 SM.

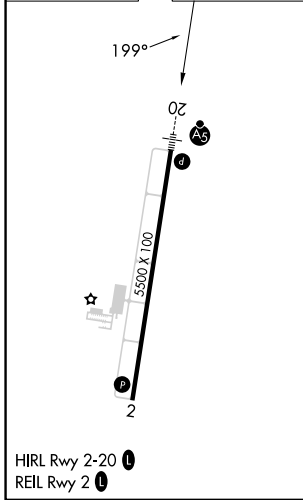
MALSR 

MISSED APPROACH: Climb to 2000 direct VINGR and hold.

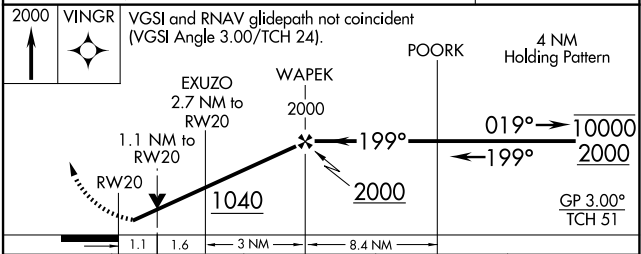
AWOS-3PT 119.975	WASHINGTON CENTER 132.025 290.425	UNICOM 123.075 (CTAF) 0
----------------------------	---	-----------------------------------




ELEV 144	TDZE 144
-----------------	-----------------



ROANOKE RAPIDS, NORTH CAROLINA
Amdt 2B 06OCT22



CATEGORY	A	B	C	D
LPV DA		394-3/4	250 (300-3/4)	
LNAV/VNAV DA		423-3/4	279 (300-3/4)	
LNAV MDA		520-3/4	376 (400-3/4)	
 CIRCLING	580-1 436 (500-1)	600-1 456 (500-1)	780-1 3/4 636 (700-1 3/4)	860-2 1/4 716 (800-2 1/4)

HALIFAX/NORTHAMPTON RGNL (IXA)
RNAV (GPS) RWY 20
36°20'N-77°38'W

SE-2, 15 MAY 2025 to 12 JUN 2025

SE-2, 15 MAY 2025 to 12 JUN 2025