

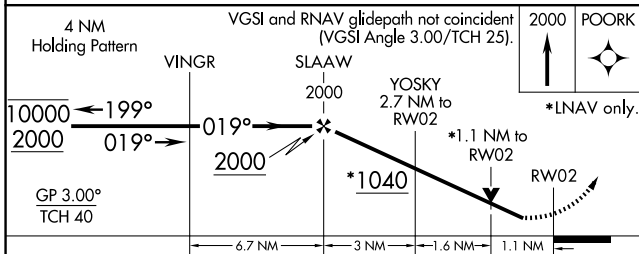
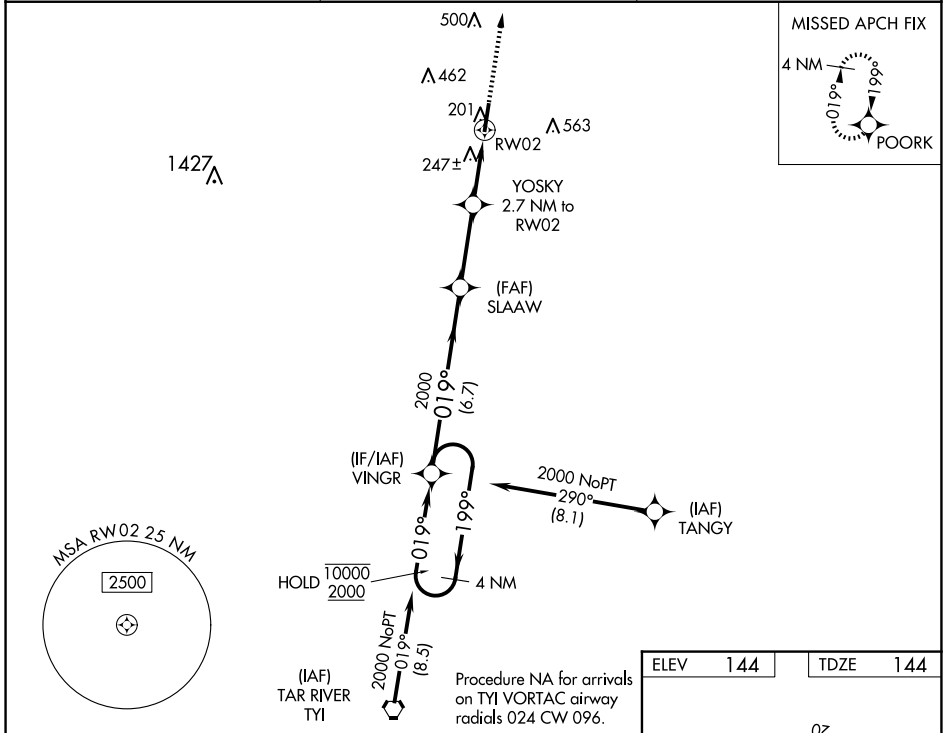
WAAS CH 78025 W02A	APP CRS 019°	Rwy Idg 5500 TDZE 144 Apt Elev 144
--	------------------------	---

RNAV (GPS) RWY 2

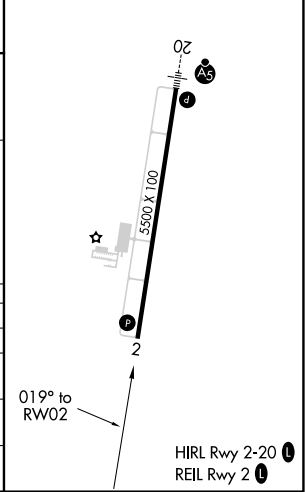
HALIFAX/NORTHAMPTON RGNL (IXA)

RNP APCH - GPS	Rwy 2 helicopter visibility reduction below 3/4 SM NA. For uncompensated Baro-VNAV systems, LNAV/VNAV NA below -15°C or above 54°C. Circling NA east of Rwys 2-20.	MISSED APPROACH: Climb to 2000 direct POORK and hold.
----------------	--	---

AWOS-3PT 119.975	WASHINGTON CENTER 132.025 290.425	UNICOM 123.075 (CTAF) 0
----------------------------	---	-----------------------------------



ELEV	144	TDZE	144
------	-----	------	-----



CATEGORY	A	B	C	D
LPV DA		394-7/8	250 (300-7/8)	
LNAV/VNAV DA		433-1	289 (300-1)	
LNAV MDA		500-1	356 (400-1)	
CIRCLING	580-1	600-1	780-1 3/4	860-2 1/4
	436 (500-1)	456 (500-1)	636 (700-1 3/4)	716 (800-2 1/4)

SE-2, 15 MAY 2025 to 12 JUN 2025

SE-2, 15 MAY 2025 to 12 JUN 2025