

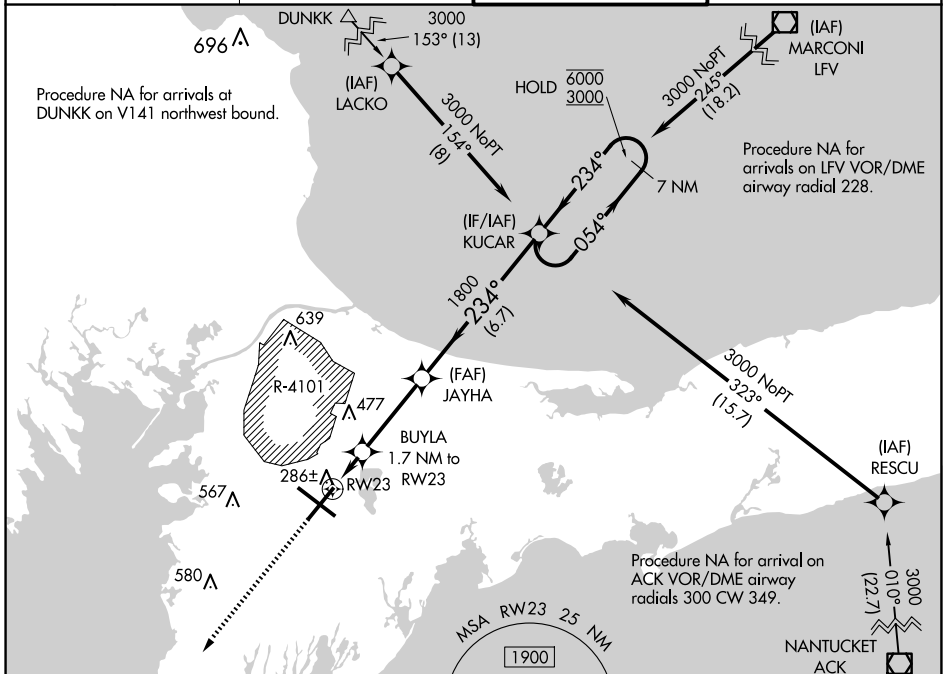
WAAS CH <b>97337</b> <b>W23A</b>	APP CRS <b>234°</b>	Rwy Idg TDZE Apt Elev	<b>8000</b> <b>126</b> <b>130</b>
--	------------------------	-----------------------------	---

# RNAV (GPS) RWY 23

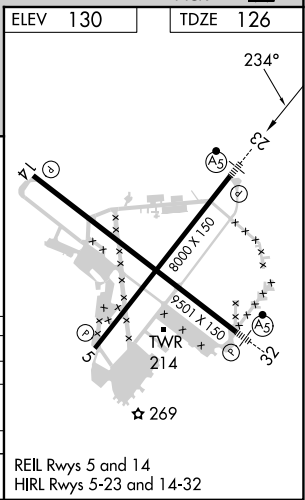
CAPE COD COAST GUARD AIR STATION (F'MH)

RNP APCH.	MALSR	MISSED APPROACH:
<p>For uncompensated Baro-VNAV systems, procedure NA below -15°C or above 54°C. Circling NA NE of Rwy 14 and NW of Rwy 23. For inop ALS, increase LNAV/VNAV all Cats visibility to RVR 5500 and LNAV Cats C and D visibility to RVR 6000.</p>		<p>Climb to 3000 direct GLESO and hold.</p>

ATIS <b>120.475 236.825</b>	BOSTON APP CON <b>118.2 284.6</b>	COAST GUARD TOWER <b>128.425 291.1</b>	GND CON <b>124.15 275.8</b>
--------------------------------	--------------------------------------	---	--------------------------------



ELEV 130	TDZE 126
<p>3000 GLESO *LNAV only.</p> <p>RW23</p> <p>1.1 NM to RW23</p> <p>0.6 NM</p> <p>3.4 NM</p> <p>6.7 NM</p> <p>BUYLA 1.7 NM to RW23</p> <p>JAYHA 1800</p> <p>720*</p> <p>1800</p> <p>KUCAR 7 NM Holding Pattern</p> <p>054° → 6000</p> <p>← 234° 3000</p> <p>GP 3.00° TCH 54</p>	<p>GLESO</p> <p>MSA RW23 25 NM</p> <p>1900</p>
CATEGORY	A B C D
LPV DA	326/24 200 (200-½)
LNAV/VNAV DA	467/30 341 (400-¾)
LNAV MDA	540/24 414 (500-½) 540/40 414 (500-¾)
CIRCLING	580-1 450 (500-1) 640-1 510 (600-1) 900-2¼ 770 (800-2¼) 900-2½ 770 (800-2½)



NE-1, 15 MAY 2025 to 12 JUN 2025

NE-1, 15 MAY 2025 to 12 JUN 2025