

LOC/DME I-BNX 110.75 Chan 44(Y)	APP CRS 322°	Rwy Idg TDZE 116 Apt Elev 130	9501
----------------------------------------------	------------------------	---------------------------------------------------	-------------

ILS Z or LOC Z RWY 32

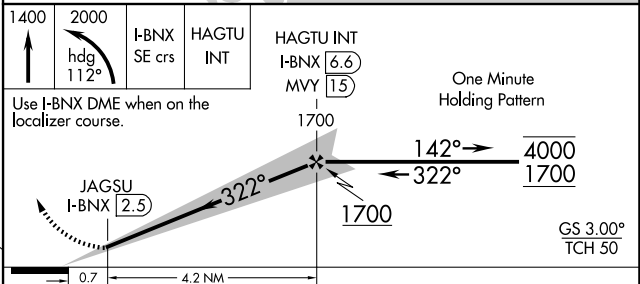
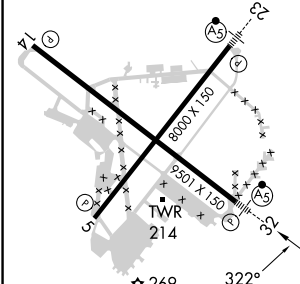
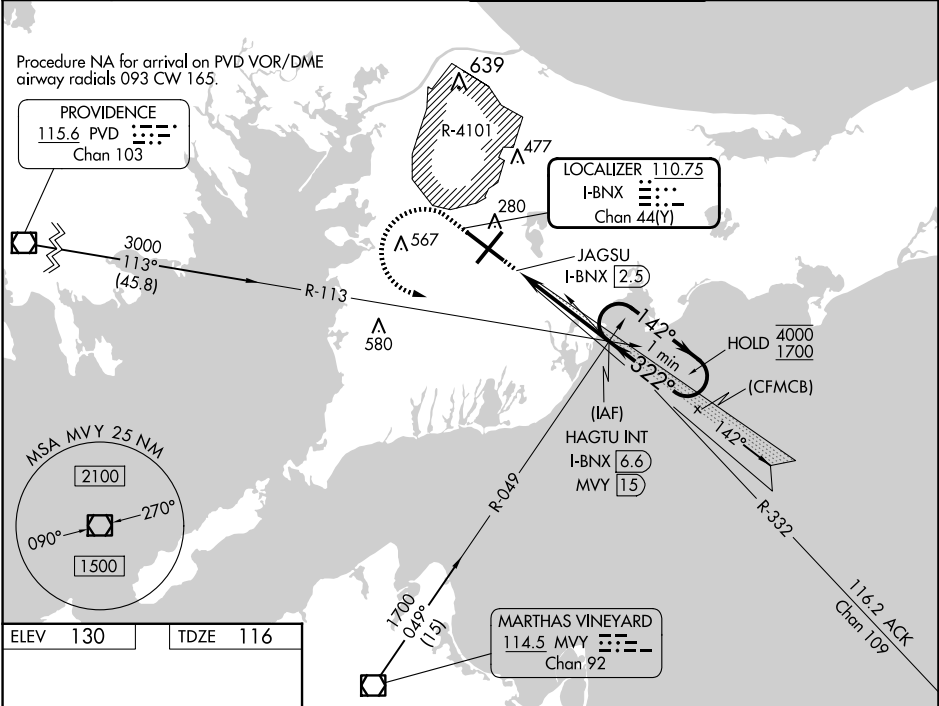
CAPE COD COAST GUARD AIR STATION (F'MH)

⚠ Circling NA northeast of Rwy 14 and northwest of Rwy 23.
For inop ALS, increase S-LOC 32 Cats C/D visibility to RVR 6000.
*RVR 1800 authorized with use of FD or AP or HUD to DA.



MISSED APPROACH: Climb to 1400 then climbing left turn to 2000 on heading 112° and I-BNX localizer SE course to HAGTU INT/I-BNX 6.6 DME and hold.

ATIS 120.475 236.825	BOSTON APP CON 118.2 284.6	COAST GUARD TOWER 128.425 291.1	GND CON 124.15 275.8
--------------------------------	--------------------------------------	-------------------------------------------	--------------------------------



CATEGORY	A	B	C	D
S-ILS 32*	316/24 200 (200-½)			
S-LOC 32	520/24	404 (400-½)	520/40	404 (400-¾)
☑ CIRCLING	580-1 450 (500-1)	640-1 510 (600-1)	900-2¼ 770 (800-2¼)	900-2½ 770 (800-2½)

NE-1, 15 MAY 2025 to 12 JUN 2025

NE-1, 15 MAY 2025 to 12 JUN 2025