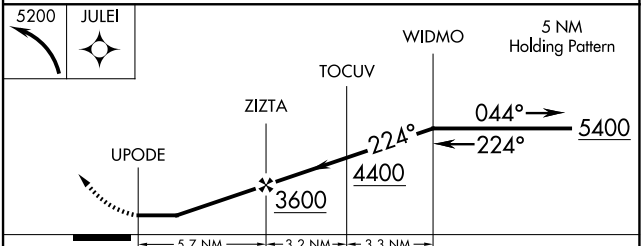
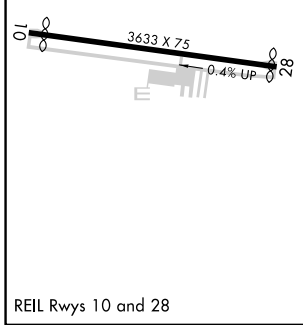
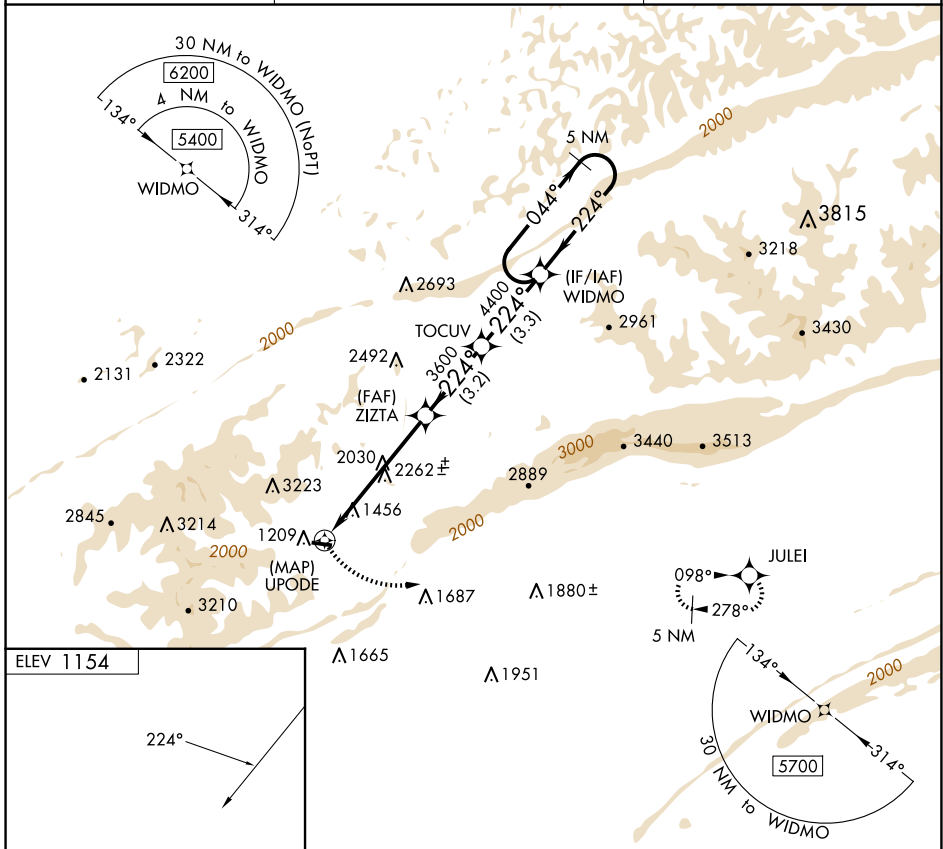


APP CRS 224°	Rwy Idg TDZE Apt Elev	NA NA 1154
------------------------	-----------------------------	---------------------------------------

RNAV (GPS)-A

MIDDLESBORO/BELL COUNTY (1A6)

 -14°C	DME/DME RNP-0.3 NA. When local altimeter setting not received, use London altimeter setting: increase all MDA 100 feet. Procedure NA at night. Helicopter visibility reduction below 1 SM NA.		MISSED APPROACH: Climbing left turn to 5200 direct JULEI and hold.
	AWOS-3 119.425	INDIANAPOLIS CENTER 124.625 371.925	



CATEGORY	A	B	C	D
CIRCLING	2780-1¼ 1626 (1700-1¼)	3080-1½ 1926 (2000-1½)		NA

RNAV (GPS)-A

SE-1, 15 MAY 2025 to 12 JUN 2025

SE-1, 15 MAY 2025 to 12 JUN 2025