

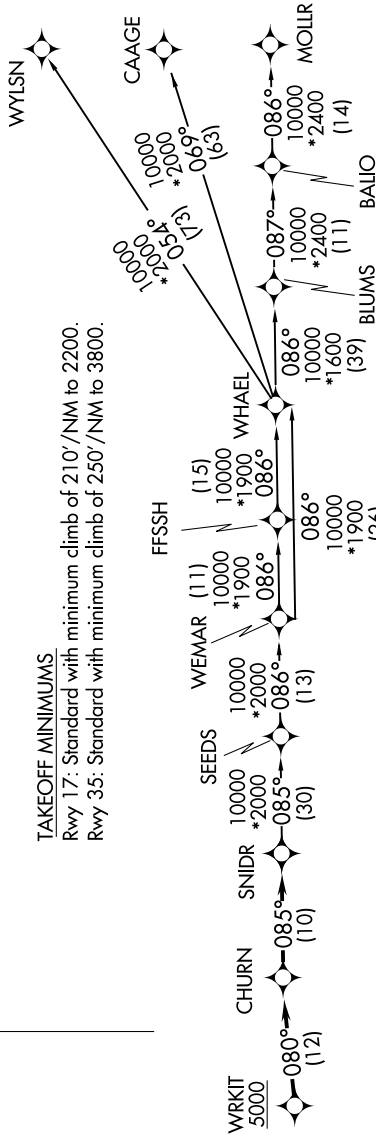
**TOP ALTITUDE:
ASSIGNED BY ATC**

RNAV 1 - DME/DME IRU or GPS.
RADAR required.

SAN ANTONIO DEP CON
125.1 307.0



TAKEOFF MINIMUMS
Rwy 17: Standard with minimum climb of 210'/NM to 2200.
Rwy 35: Standard with minimum climb of 250'/NM to 3800.

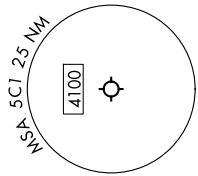


DEPARTURE ROUTE DESCRIPTION

TAKEOFF RUNWAY 17: Climb on heading 169° or as assigned by ATC, for vectors to WRKIT, thence
TAKEOFF RUNWAY 35: Climb on heading 349° or as assigned by ATC, for vectors to WRKIT, thence

. . . . on track 080° to CHURN, then on track 085° to SNIDR, then on transition. Maintain ATC assigned altitude.

- BLUMS TRANSITION (SNIDR1.BLUMS)
- CAAGE TRANSITION (SNIDR1.CAAGE)
- FFSSH TRANSITION (SNIDR1.FFSSH)
- MOLLR TRANSITION (SNIDR1.MOLLR)
- SEEDS TRANSITION (SNIDR1.SEEDS)
- WEMAR TRANSITION (SNIDR1.WEMAR)
- WHAEL TRANSITION (SNIDR1.WHAEL)
- WYLSN TRANSITION (SNIDR1.WYLSN)



Note: Chart not to scale.