

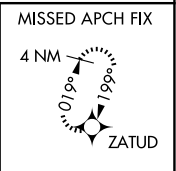
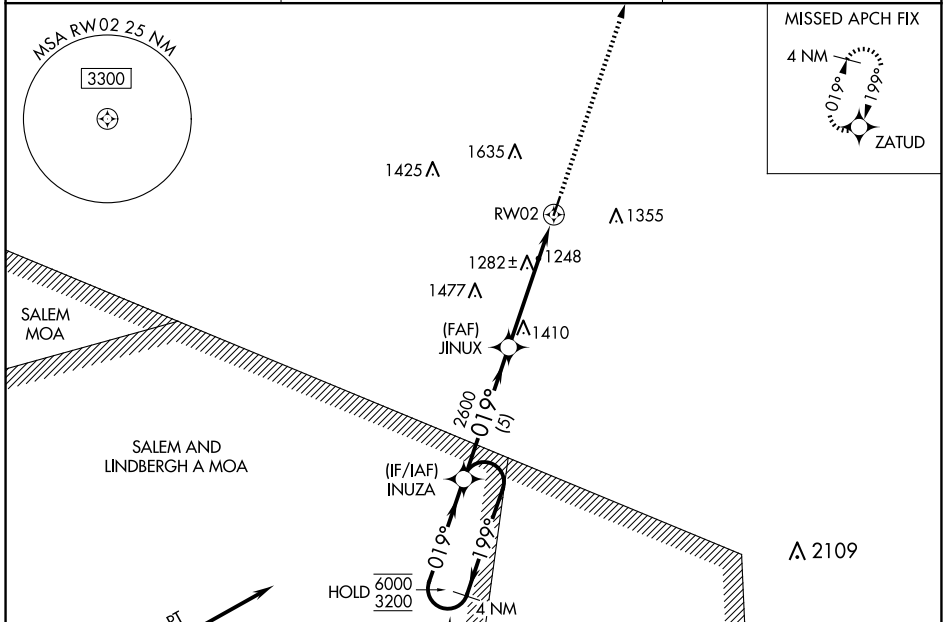
WAAS CH <b>93624</b> <b>W02A</b>	APP CRS <b>019°</b>	Rwy Idg TDZE Apt Elev	<b>4000</b> <b>959</b> <b>959</b>
--	------------------------	-----------------------------	---

# RNAV (GPS) RWY 2

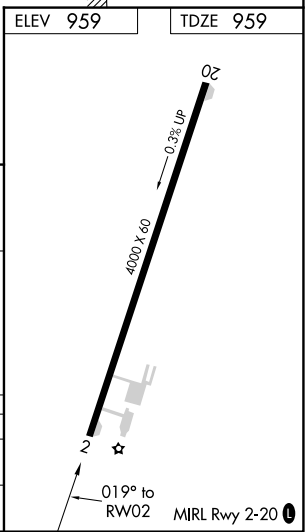
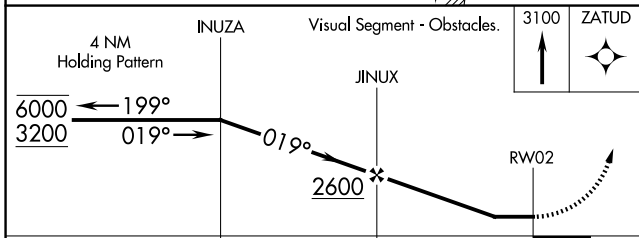
WASHINGTON COUNTY (8WC)

RNP APCH-GPS.		MISSED APPROACH: Climb to 3100 direct ZATUD and hold.
NA Rwy 2 helicopter visibility reduction below 3/4 SM NA. Use Farmington altimeter setting.		

FAM AWOS-3PT <b>119.275</b>	KANSAS CITY CENTER <b>128.35 284.675</b>	UNICOM <b>123.0 (CTAF)</b>
--------------------------------	---	-------------------------------



ELEV 959	TDZE 959
----------	----------



CATEGORY	A	B	C	D
LP MDA	1680-1	721 (800-1)		NA
LNAV MDA	1760-1 801 (900-1)	1760-1¼ 801 (900-1¼)		NA

NC-3, 15 MAY 2025 to 12 JUN 2025

NC-3, 15 MAY 2025 to 12 JUN 2025