

APP CRS	Rwy Idg	6004
168°	TDZE	364
	Apt Elev	364

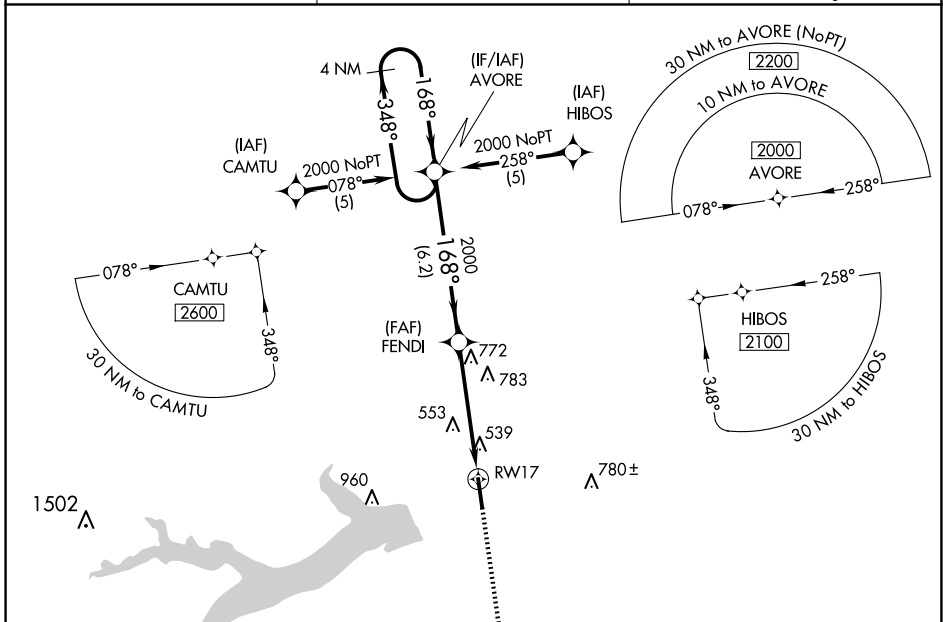
RNAV (GPS) RWY 17

MOUNT PLEASANT RGNL (OSA)

⚠ For uncompensated Baro-VNAV systems, LNAV/VNAV NA below -15°C (5°F) or above 48°C (118°F). DME/DME RNP-0.3 NA. When local altimeter setting not received, use Paris altimeter setting and increase all DA/MDA 120 feet, increase LNAV/VNAV visibilities ¼ mile all Cats, LNAV visibilities ½ mile all Cats, and circling visibilities ½ mile all Cats. VDP and Baro-VNAV NA when using Paris altimeter setting.

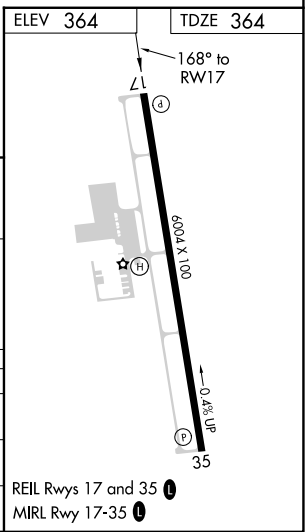
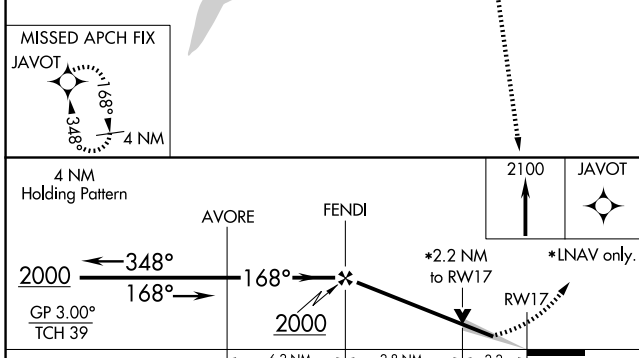
⚠ MISSED APPROACH: Climb to 2100 direct JAVOT and hold.

AWOS-3 119.775	FORT WORTH CENTER 132.025 360.75	UNICOM 122.7 (CTAF) 0
--------------------------	--	---------------------------------



SC-2, 15 MAY 2025 to 12 JUN 2025

SC-2, 15 MAY 2025 to 12 JUN 2025



CATEGORY	A	B	C	D
LNAV/VNAV DA	890-2 526 (600-2)			
LNAV MDA	1100-1 736 (800-1)	1100-2 736 (800-2)	1100-2 736 (800-2)	1100-2 736 (800-2) 1/4
CIRCLING	1100-1 736 (800-1)	1100-2 736 (800-2)	1100-2 736 (800-2)	1100-2 736 (800-2) 1/4