

WAAS CH 90116 W01A	APP CRS 013°	Rwy Idg TDZE Apt Elev	6000 467 488
--	------------------------	-----------------------------	---

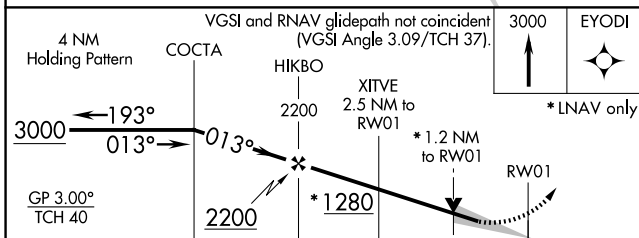
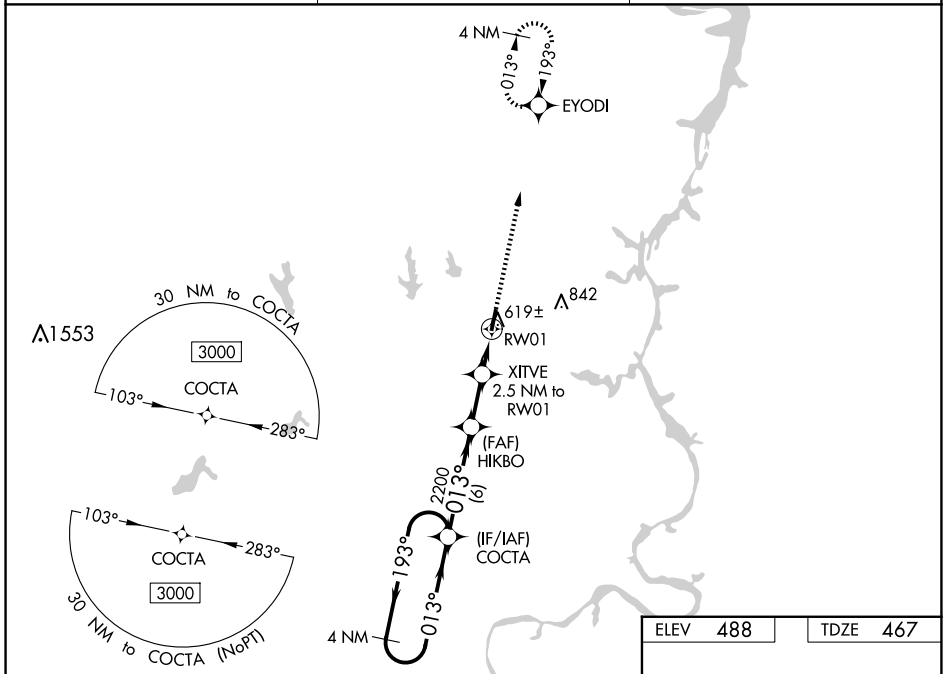
RNAV (GPS) RWY 1

BEECH RIVER RGNL (PVE)

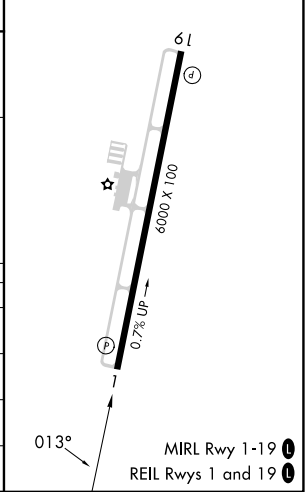
⚠ For uncompensated Baro-VNAV systems, LNAV/VNAV NA below -15°C (5° F) or above 54°C (130°F).
⚠ DME/DMÉ RNP-0.3 NA. When local altimeter setting not received, use Jackson altimeter setting; increase LPV all Cats DA to 807 and all Cats visibility $\frac{3}{8}$ mile; increase LNAV/VNAV all Cats DA to 911 and all Cats visibility $\frac{3}{8}$ mile; increase all MDA 100 feet and LNAV Cats C/D and Circling Cat C visibility $\frac{1}{2}$ mile and Circling Cat D visibility $\frac{1}{2}$ mile. Baro-VNAV and VDP NA when using Jackson altimeter setting.

MISSED APPROACH: Climb to 3000 direct EYODI and hold.

AWOS-3 118.125	MEMPHIS CENTER 125.85 379.25	UNICOM 123.0 (CTAF) 0
--------------------------	--	---------------------------------



ELEV 488	TDZE 467
----------	----------



CATEGORY	A	B	C	D
LPV DA		717- $\frac{7}{8}$	250 (300- $\frac{7}{8}$)	
LNAV/VNAV DA		821-1 $\frac{1}{4}$	354 (400-1 $\frac{1}{4}$)	
LNAV MDA	880-1	413 (400-1)	880-1 $\frac{1}{8}$	413 (400-1 $\frac{1}{8}$)
C CIRCLING	940-1 452 (500-1)	980-1 492 (500-1)	1000-1 $\frac{1}{2}$ 512 (600-1 $\frac{1}{2}$)	1200-2 $\frac{1}{4}$ 712 (800-2 $\frac{1}{4}$)

SE-1, 15 MAY 2025 to 12 JUN 2025

SE-1, 15 MAY 2025 to 12 JUN 2025