

WAAS CH <b>70335</b> <b>W26A</b>	APP CRS <b>264°</b>	Rwy Idg TDZE Apt Elev	<b>3299</b> <b>967</b> <b>967</b>
--	------------------------	-----------------------------	---

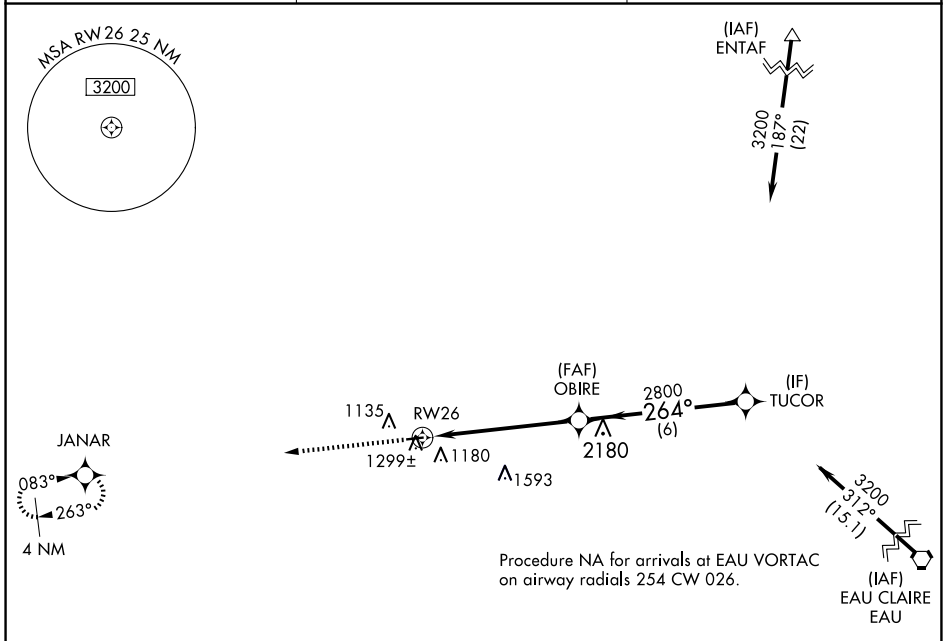
# RNAV (GPS) RWY 26

BOYCEVILLE MUNI (3T3)

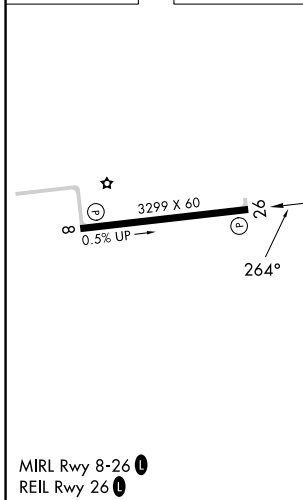
**Baro-VNAV NA.** Use New Richmond altimeter setting; when not received, use Menomonic altimeter setting. DME/DME RNP-0.3 NA. Helicopter visibility reduction below 1 SM NA. Procedure NA at night.

**MISSED APPROACH:** Climb to 2800 direct JANAR and hold.

RNH AWOS-3 <b>120.0</b>	MINNEAPOLIS CENTER <b>125.3 335.6</b>	UNICOM <b>122.8 (CTAF) 0</b>
----------------------------	--	---------------------------------



ELEV 967	TDZE 967
----------	----------



2800	JANAR	VGSI and descent angles not coincident (VGSI Angle 3.00/TCH 20).		TUCOR
		OBIRE 2800		3200
		264°		
		2800		
CATEGORY	A	B	C	D
LPV DA	1333-1¼ 366 (400-1¼)			NA
LNAV/VNAV DA	1526-2 559 (600-2)			NA
LNAV MDA	1620-1	653 (700-1)	1620-1⅞ 653 (700-1⅞)	NA
CIRCLING	1680-1	713 (800-1)	1700-2 733 (800-2)	NA

EC-3, 15 MAY 2025 to 12 JUN 2025

EC-3, 15 MAY 2025 to 12 JUN 2025