

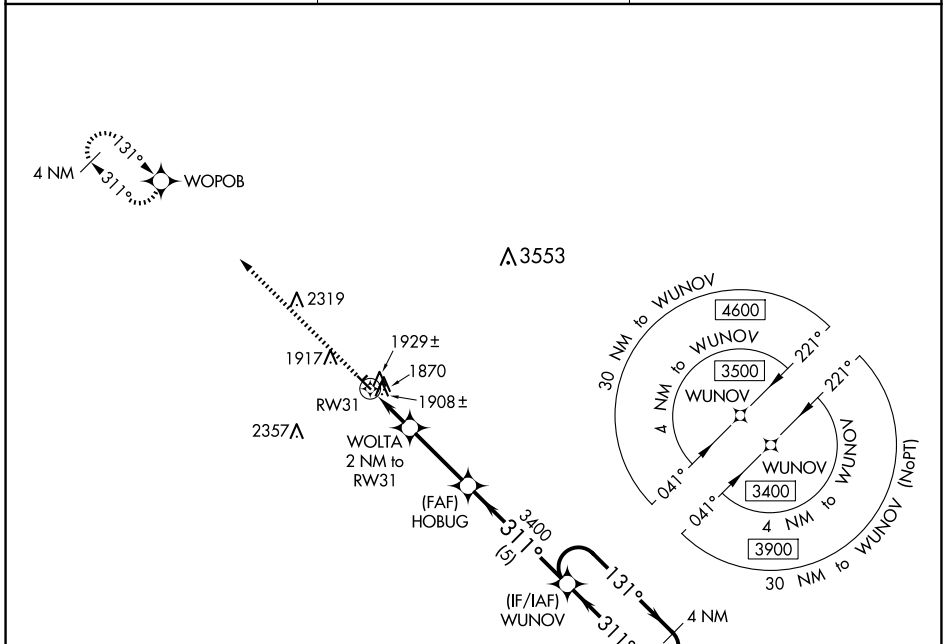
WAAS CH 63240 W31A	APP CRS 311°	Rwy Idg TDZE Apt Elev	3697 1791 1793
--	------------------------	-----------------------------	---

RNAV (GPS) RWY 31

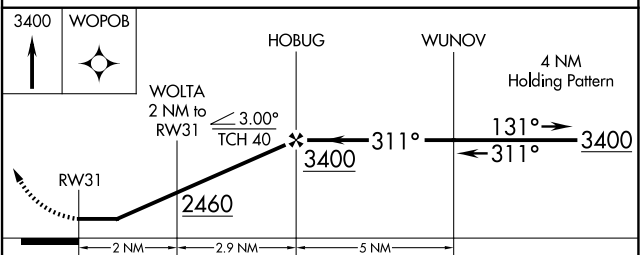
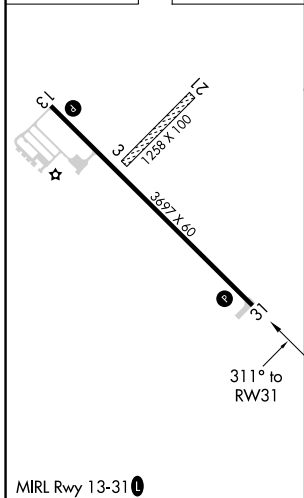
CLARK COUNTY (8D7)

<p>▽ Rwy 31 helicopter visibility reduction below 3/4 SM NA. △ NA DME/DME RNP-0.3 NA. Use Watertown altimeter setting. Circling Rwys 3, 21 NA.</p>	<p>MISSED APPROACH: Climb to 3400 direct WOPOB and hold.</p>
--	--

<p>ATY ASOS 126.625</p>	<p>MINNEAPOLIS CENTER 128.5 306.2</p>	<p>UNICOM 122.8 (CTAF) 0</p>
------------------------------------	--	---



ELEV 1793	TDZE 1791
-----------	-----------



CATEGORY		A	B	C	D
LP	MDA	2220-1	429 (500-1)		NA
LNAV	MDA	2240-1	449 (500-1)		NA
C	CIRCLING	2340-1 547 (600-1)	2380-1 587 (600-1)		NA

NC-1, 15 MAY 2025 to 12 JUN 2025

NC-1, 15 MAY 2025 to 12 JUN 2025