

WAAS CH 56540 W28A	APP CRS 283°	Rwy Idg TDZE 4230 Apt Elev 4230	6000 4230 4230
--	------------------------	---	---

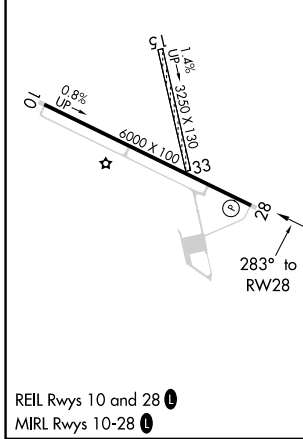
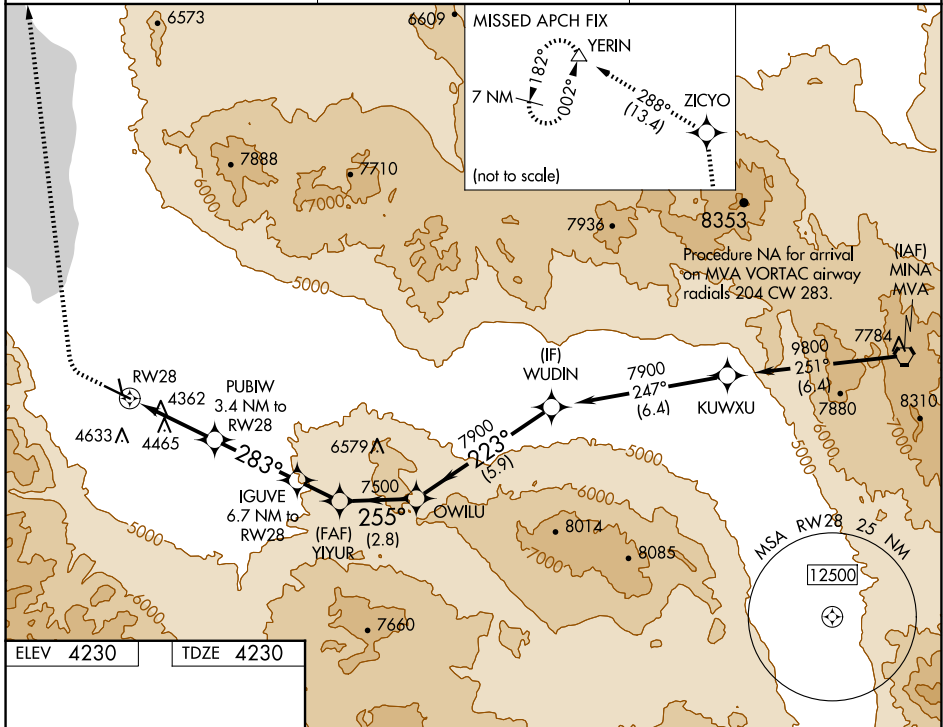
RNAV (GPS) RWY 28

HAWTHORNE INDUSTRIAL (HTH)

⚠ Circling NA to Rwys 15 and 33. When local altimeter setting not received, procedure NA. Circling NA south of Rwy 10-28. DME/DME RNP-0.3 NA. Rwy 28 helicopter visibility reduction below ¼ SM NA.

⚠ MISSED APPROACH: Climb to 4750 then climbing right turn to 10000 direct ZICYO and on track 288° to YERIN and hold.

AWOS-3 120.225	OAKLAND CENTER 125.75 284.65	UNICOM 122.8 (CTAF) 0
--------------------------	--	---------------------------------



4750	10000	ZICYO	tr 288°	YERIN	VGSI and descent angles not coincident (VGSI Angle 3.00/TCH 49).
					YIYUR
					OWILU
					WUDIN
					7900
					7900
					7500
					6840
					5580
					1.1 NM
					2.3 NM
					3.3 NM
					1.7 NM
					2.8 NM
					5.9 NM
CATEGORY	A	B	C	D	
LP MDA	4620-1	390 (400-1)	4620-1½	390 (400-1½)	NA
LNAV MDA	4720-1	490 (500-1)	4720-1¾	490 (500-1¾)	NA
C CIRCLING	4720-1	490 (500-1)	5680-3	1450 (1500-3)	NA

SW-4, 15 MAY 2025 to 12 JUN 2025

SW-4, 15 MAY 2025 to 12 JUN 2025