

| | | |
|-------------|----------|-------------|
| APP CRS | Rwy Idg | 5822 |
| 357° | TDZE | 4382 |
| | Apt Elev | 4382 |

RNAV (GPS) RWY 2

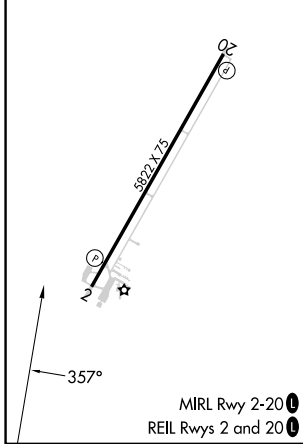
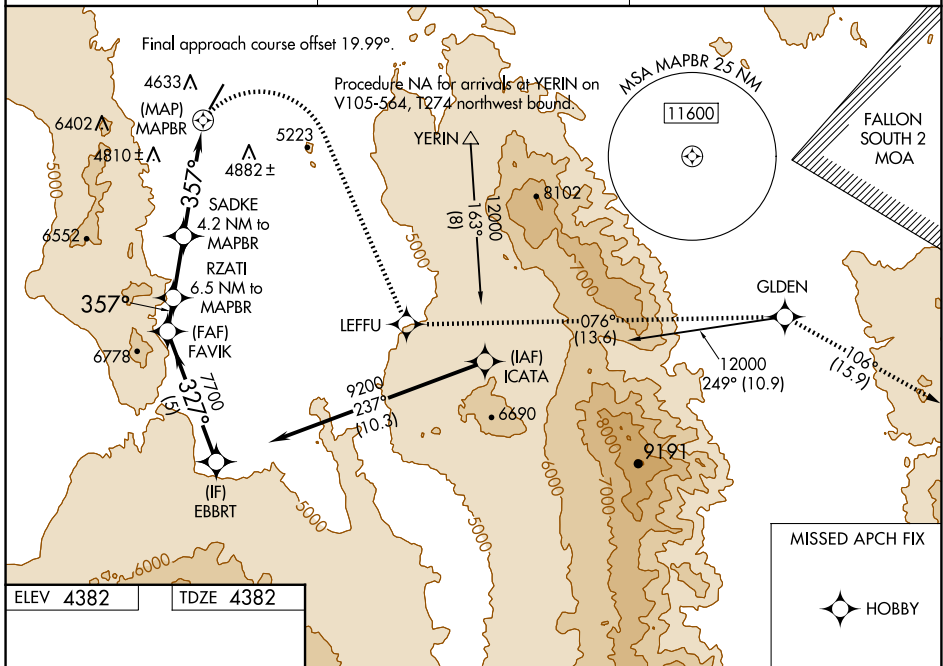
YERINGTON MUNI (O43)

RNP APCH - GPS.

NA Procedure NA at night. Rwy 2 helicopter visibility reduction below 1 SM NA. Circling NA west of Rwy 2-20. Use SPZ altimeter setting, when not received, use RNO altimeter setting and increase all MDAs 40 feet and LNAV* visibility Cat C 1/2 SM.

MISSED APPROACH: (Do not exceed 210K until LEFFU) Climbing right turn to 11500 direct LEFFU and on track 076° to GLDEN and on track 106° to HOBBY.
 *Missed approach requires minimum climb of 276 feet per NM to 9300.

| | | |
|------------------------------|--|--------------------------------|
| SPZ AWOS-2 120.475 | OAKLAND CENTER 125.75 284.65 | AUNICOM 122.8 (CTAF) |
|------------------------------|--|--------------------------------|



| | | | | | | |
|---|---------------------------------|---------------------------------|-------------------------------|--------|---------|-------|
| | 11500 | LEFFU | tr 076° | GLDEN | tr 106° | HOBBY |
| EBBRT | | | | | | |
| FAVIK | | | | | | |
| RZATI 6.5 NM to MAPBR | | | | | | |
| SADKE 4.2 NM to MAPBR | | | | | | |
| VGSIs and descent angles not coincident (VGSi Angle 3.00/TCH 40). | | | | | | |
| | 9200 | 7700 | 7200 | 6300 | | |
| | 327° | 357° | | | | |
| | 5 NM | 1.2 NM | 2.3 NM | 4.2 NM | 0.5 NM | |
| CATEGORY | A | B | C | D | | |
| LNAV MDA* | 5040-1 | 658 (700-1) | 5040-1 1/8 658 (700-1 1/8) | NA | | |
| LNAV MDA | 6200-1 1/4 1818 (1900-1 1/4) | 6200-1 1/2 1818 (1900-1 1/2) | 6200-3 1818 (1900-3) | NA | | |
| CIRCLING | 6200-1 1/4 1818 (1900-1 1/4) | 6200-1 1/2 1818 (1900-1 1/2) | 6200-3 1818 (1900-3) | NA | | |

SW-4, 15 MAY 2025 to 12 JUN 2025

SW-4, 15 MAY 2025 to 12 JUN 2025