

|  |                        |                             |   |
|--|------------------------|-----------------------------|---|
| WAAS<br>CH <b>73033</b><br><b>W01A</b> | APP CRS<br><b>005°</b> | Rwy Idg<br>TDZE<br>Apt Elev | <b>5002</b><br><b>659</b><br><b>667</b> |
|--|------------------------|-----------------------------|---|

# RNAV (GPS) RWY 1

BUTLER MUNI (6A.1)

RNP APCH-GPS.

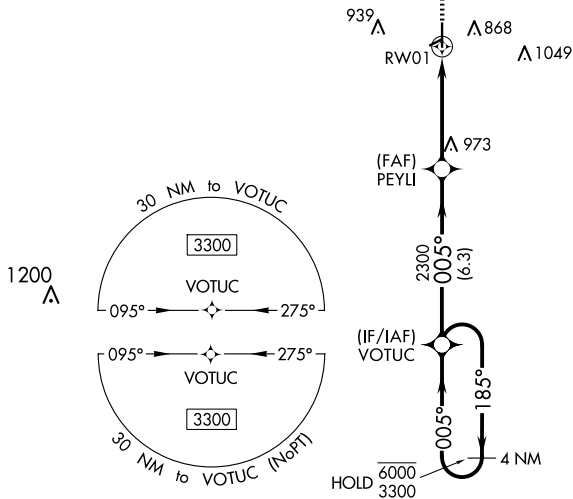
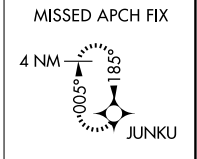
- ⚠ Circling NA to Rwy 6 and 24. Rwy 1 helicopter visibility reduction below 1 SM NA.
- ⚠ Straight-in Rwy 1 NA at night, Circling Rwy 1 NA at night. For uncompensated Baro-VNAV systems, LNAV/VNAV NA below -16°C or above 54°C.

MISSED APPROACH: Climb to 3000 direct JUNKU and hold.

AWOS-3  
**119.525**

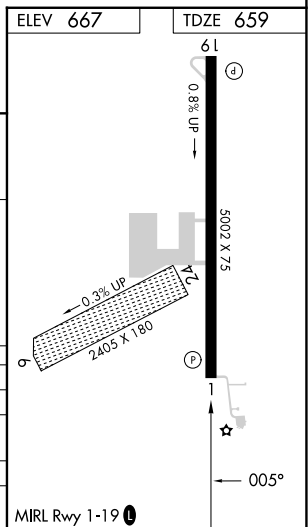
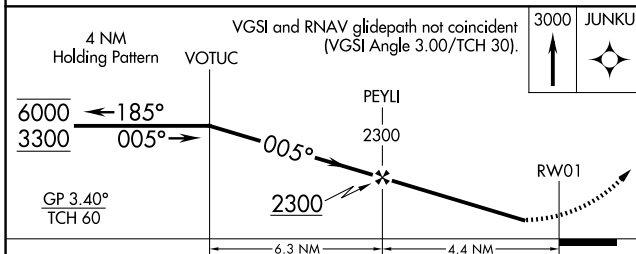
ATLANTA APP CON★  
**124.2 279.6**

CTAF  
**122.9**



SE-4, 15 MAY 2025 to 12 JUN 2025

SE-4, 15 MAY 2025 to 12 JUN 2025



| CATEGORY     | A      | B           | C            | D            |
|--------------|--------|-------------|--------------|--------------|
| LPV DA       |        | 934-1       | 275 (300-1)  |              |
| LNAV/VNAV DA |        | 1036-1      | 377 (400-1)  |              |
| LNAV MDA     | 1240-1 | 581 (600-1) | 1240-1¾      | 581 (600-1¾) |
| CIRCLING     | 1240-1 | 573 (600-1) | 1240-1¾      | 1360-2¼      |
|              |        |             | 573 (600-1¾) | 693 (700-2¼) |

MIRL Rwy 1-19