


WAAS CH <b>90439</b> <b>W31A</b>	APP CRS <b>307°</b>	Rwy Idg TDZE Apt Elev	<b>5002</b> <b>319</b> <b>328</b>
--	------------------------	-----------------------------	---

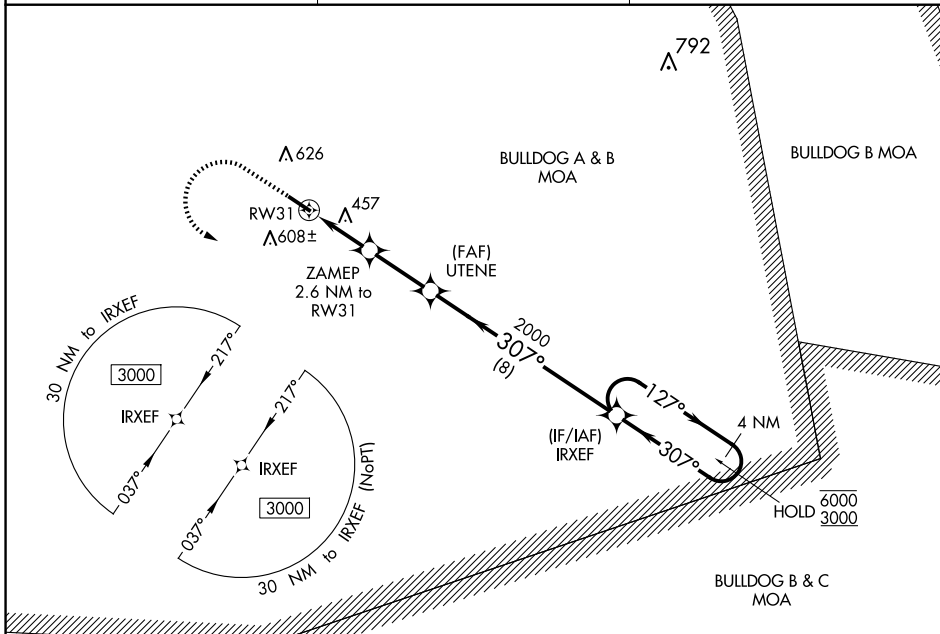
# RNAV (GPS) RWY 31

LOUISVILLE MUNI (2J3)

RNP APCH - GPS.  
 For uncompensated Baro-VNAV systems, LNAV/VNAV NA below -15°C or above 54°C.

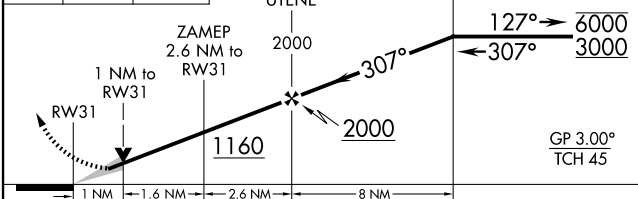
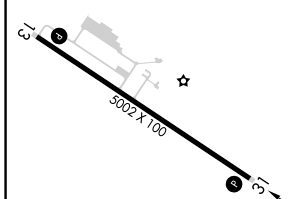
MISSED APPROACH: Climb to 1000 then climbing left turn to 3000 direct IRXEF and hold.


AWOS-3PT <b>119.35</b>	AUGUSTA APP CON <b>126.8 270.3</b>	CTAF <b>122.9</b>
---------------------------	---------------------------------------	----------------------



ELEV 328	TDZE 319
----------	----------

1000 3000 IRXEF  
 VGSI and RNAV glidepath not coincident (VGSI Angle 3.65/TCH 27).  
 4 NM Holding Pattern



CATEGORY	A	B	C	D
LPV DA	569-1		250 (300-1)	
LNAV/VNAV DA	720-1½		401 (400-1½)	
LNAV MDA	720-1	401 (400-1)	720-1½	401 (400-1½)
 CIRCLING	840-1 512 (600-1)	980-1 652 (700-1)	980-1¾ 652 (700-1¾)	980-2 652 (700-2)

REIL Rwy 13 and 31  
 MIRL Rwy 13-31

SE-4, 15 MAY 2025 to 12 JUN 2025

SE-4, 15 MAY 2025 to 12 JUN 2025