

WAAS CH <b>97335</b> <b>W05A</b>	APP CRS <b>053°</b>	Rwy Idg <b>3508</b> TDZE <b>604</b> Apt Elev <b>610</b>
--	------------------------	---

# RNAV (GPS) RWY 5

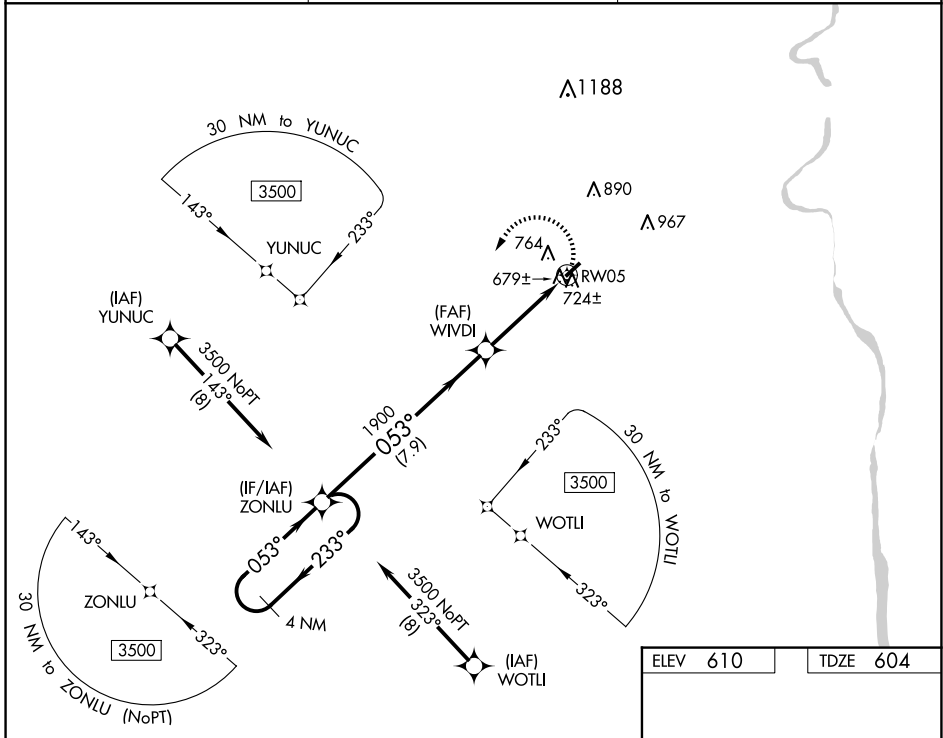
UNION COUNTY, TROY SHELTON FLD (35A)

RNP APCH.

When local altimeter setting not received, use Laurens altimeter setting.  
 Procedure NA at night. Rwy 5 helicopter visibility reduction below 1 SM NA.

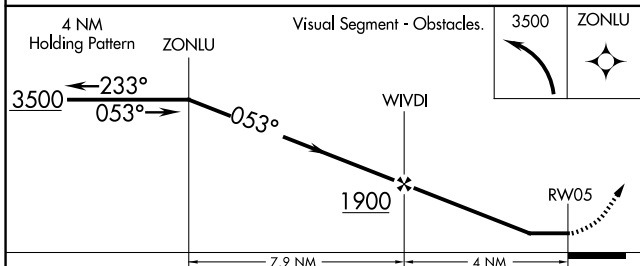
MISSED APPROACH: Climbing left turn to 3500 direct ZONLU and hold.

AWOS-3PT <b>119.45</b>	GREER APP CON ★ <b>119.4 350.2</b>	UNICOM <b>122.7 (CTAF) 0</b>
---------------------------	---------------------------------------	---------------------------------



SE-2, 15 MAY 2025 to 12 JUN 2025

SE-2, 15 MAY 2025 to 12 JUN 2025



ELEV 610	TDZE 604
----------	----------

CATEGORY	A	B	C	D
LP MDA	1000-1	396 (400-1)		NA
LNAV MDA	1040-1	436 (500-1)		NA
<b>C</b> CIRCLING	1180-1	570 (600-1)		NA

