

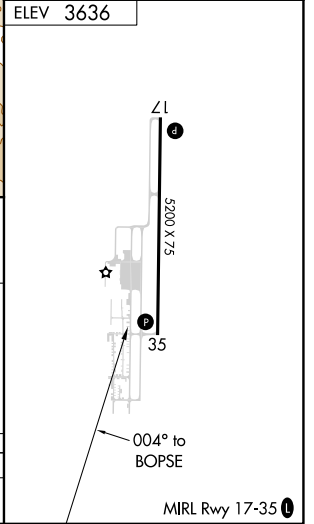
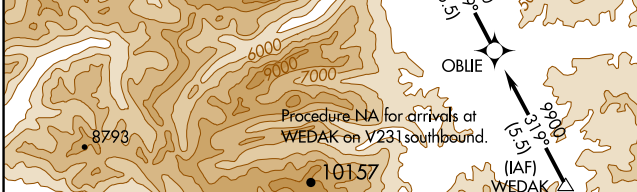
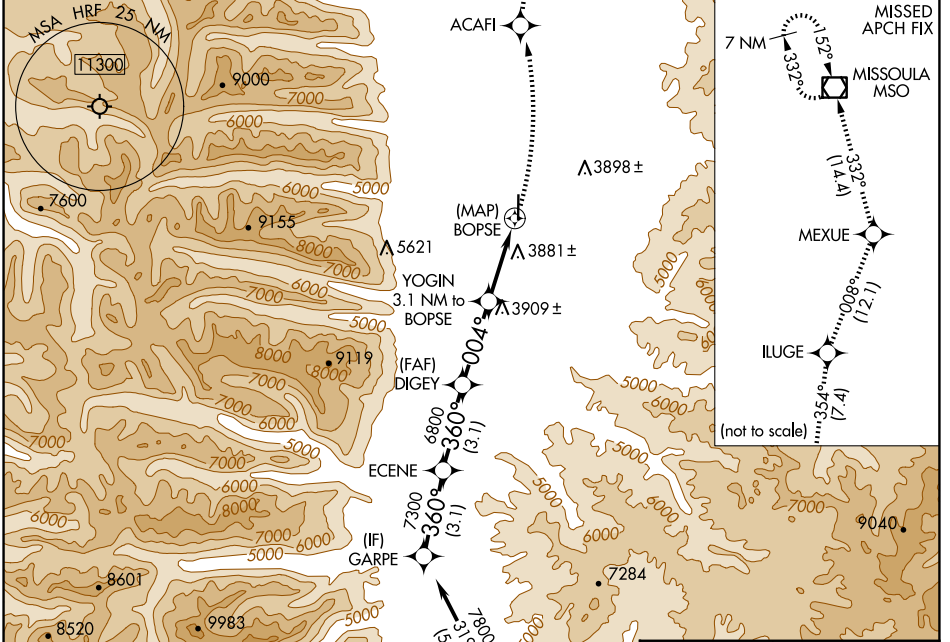
APP CRS	Rwy Idg	N/A
004°	TDZE	N/A
	Apt Elev	3636

RNAV (GPS)-A

RAVALLI COUNTY (HRF)

RNP APCH-GPS.	MISSED APPROACH: Climbing left turn to 11200 direct ACAFI and on track 354° to ILUGE and track 008° to MEXUE and track 332° to MISSOULA VOR/DME and hold.
Circling to Rwy 35 NA at night. Rwy 35 helicopter visibility reduction below 1 SM NA.	

AWOS-3P 119.825	SALT LAKE CENTER 132.4 338.3	UNICOM 122.8 (CTAF)
---------------------------	--	-------------------------------



	11200	ACAFI	ILUGE	MEXUE	MSO
		tr 354°	tr 008°	tr 332°	
		DIGEY	YOGIN	BOPSE	
			3.1 NM to BOPSE		
CATEGORY	A	B	C	D	
CIRCLING	4240-1 604 (700-1)	4260-1 624 (700-1)	NA		

NW-1, 15 MAY 2025 to 12 JUN 2025

NW-1, 15 MAY 2025 to 12 JUN 2025