

APP CRS <b>047°</b>	Rwy Idg <b>6027</b>
	TDZE <b>2454</b>
	Apt Elev <b>2454</b>

# RNAV (GPS) RWY 6

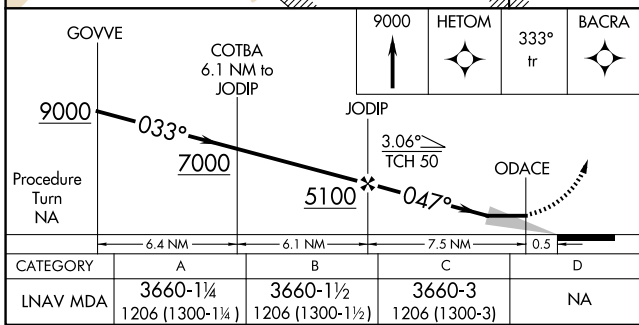
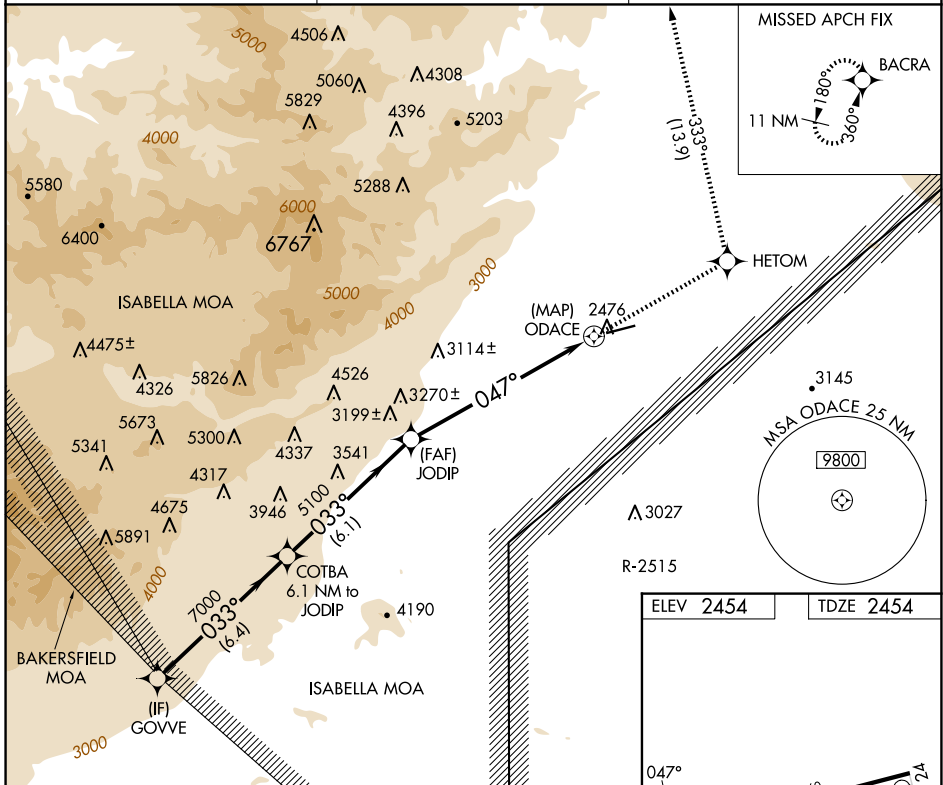
CALIFORNIA CITY MUNI (L71)

RNP APCH.  
RADAR required.

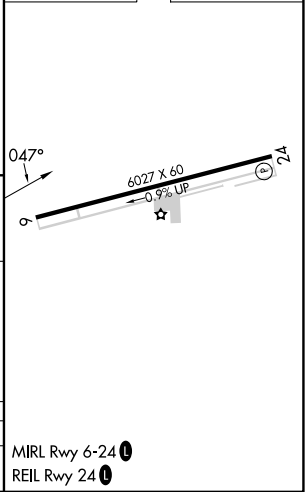
**▽** If local altimeter setting not received, use Edwards AFB altimeter setting and increase all MDAs 60 feet; if neither received, procedure not authorized.

MISSED APPROACH: Climb to 9000 direct HETOM and via 333° track to BACRA and hold, continue climb-in-hold to 9000.

AWOS-1 <b>120.875</b>	JOSHUA APP CON <b>133.65 348.7</b>	UNICOM <b>122.7 (CTAF)</b>
--------------------------	---------------------------------------	-------------------------------



ELEV 2454	TDZE 2454
-----------	-----------



SW-3, 15 MAY 2025 to 12 JUN 2025

SW-3, 15 MAY 2025 to 12 JUN 2025

MIRL Rwy 6-24  
REIL Rwy 24