

APP CRS	Rwy Idg	N/A
104°	TDZE	N/A
	Apt Elev	412

# RNAV (GPS)-B

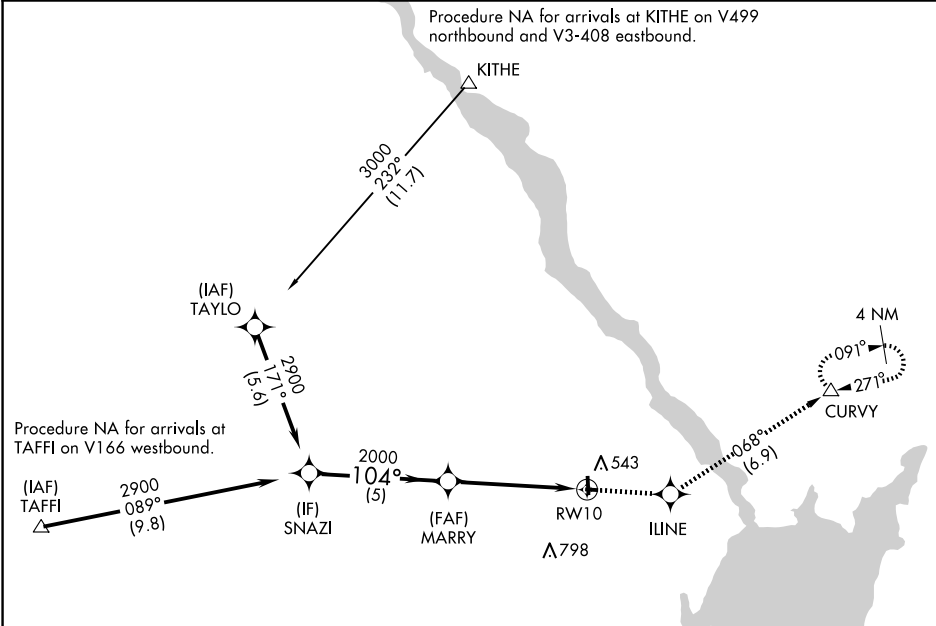
HARFORD COUNTY (ØW3)

RNP APCH - GPS.

**▼** Rwy 1, 19, 10 and 28 helicopter visibility reduction below 1 SM NA.  
**▲** When local altimeter setting not received, use Aberdeen Proving Grounds (Aberdeen) altimeter setting and increase all MDAs 80 feet.  
 Procedure NA at night.

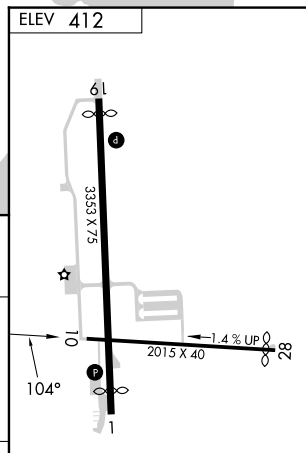
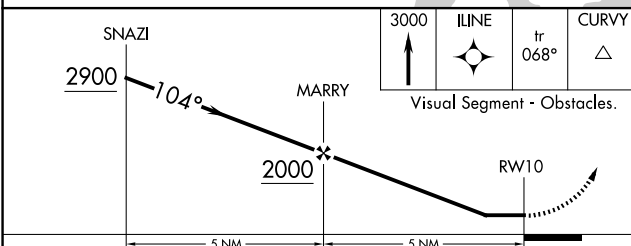
**MISSED APPROACH:** Climb to 3000 direct ILINE and on track 068° to CURVY and hold, continue climb-in-hold to 3000.

AWOS-3PT <b>132.725</b>	KAPG ATIS * <b>124.425</b>	POTOMAC APP CON <b>125.525 291.625</b>	UNICOM <b>122.8 (CTAF) 0</b>
----------------------------	-------------------------------	-------------------------------------------	---------------------------------



NE-3, 15 MAY 2025 to 12 JUN 2025

NE-3, 15 MAY 2025 to 12 JUN 2025



CATEGORY	A	B	C	D
<b>C</b> CIRCLING	960-1 548 (600-1)		NA	

MIRL Rwy 1-19 0  
 REIL Rws 1 and 19 0  
 REIL Rws 10 and 28