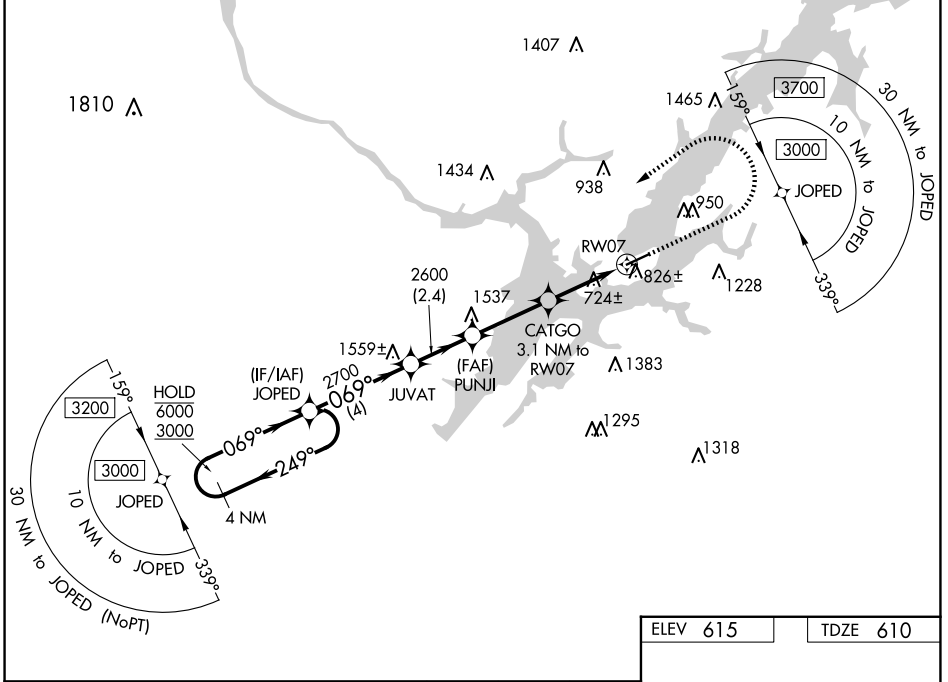


WAAS CH 90340 W07A	APP CRS 069°	Rwy Idg 5005 TDZE 610 Apt Elev 615
--	------------------------	---

RNAV (GPS) RWY 7

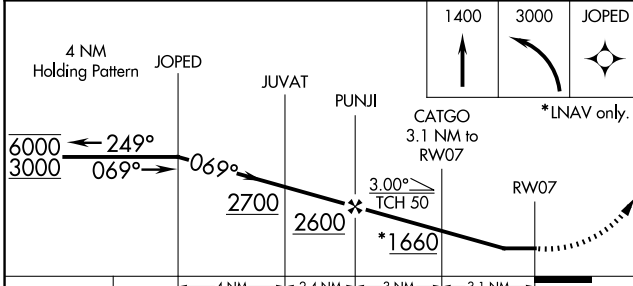
GUNTERSVILLE MUNI/JOE STARNES FLD (8A.1)

RNP APCH.		MISSED APPROACH: Climb to 1400 then climbing left turn to 3000 direct JOPED and hold.	
AWOS-3PT 121.125	4A6 AWOS-3PT 120.125	HUNTSVILLE APP CON ★ 125.6 354.1	UNICOM 122.8 (CTAF) ①



SE-4, 15 MAY 2025 to 12 JUN 2025

SE-4, 15 MAY 2025 to 12 JUN 2025



ELEV 615	TDZE 610
----------	----------

CATEGORY	A	B	C	D
LP MDA	1040-1	430 (500-1)	1040-1¼	430 (500-1¼)
LNAV MDA	1140-1	530 (600-1)	1140-1½	530 (600-1½)
C CIRCLING	1360-1 745 (800-1)	1380-1 765 (800-1)	1620-3 1005 (1100-3)	1840-3 1225 (1300-3)

REL Rwy 7 and 25 ①
MIRL Rwy 7-25 ②