

LOC I-CPF 109.35	APP CRS 145°	Rwy Idg 5499
		TDZE 1243
		Apt Elev 1256

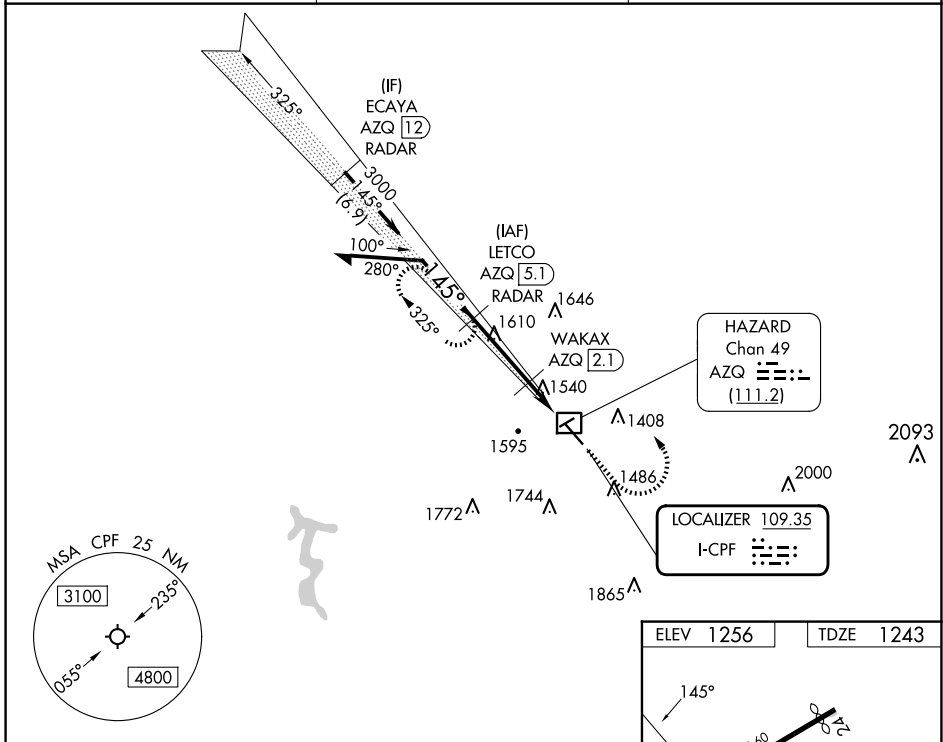
LOC RWY 14
WENDELL H FORD (CPF)

DME required. RADAR required for procedure entry.
RADAR required for missed approach.

▼ Circling Rwy 24, 32 NA at night. Simultaneous reception of I-CPF and AZQ DME required. Rwy 14 helicopter visibility reduction below 3/4 SM NA.
▲ DME from AZQ DME.

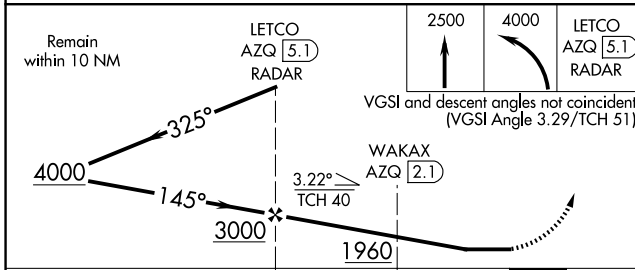
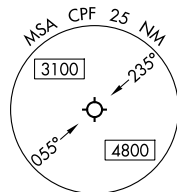
MISSED APPROACH: Climb to 2500 then climbing left turn to 4000 to LETCO/AZQ 5.1 DME/RADAR and hold, continue climb-in-hold to 4000.

AWOS-3 119.025	INDIANAPOLIS CENTER 126.575 257.85	UNICOM 122.7 (CTAF) 0
--------------------------	--	---------------------------------



SE-1, 15 MAY 2025 to 12 JUN 2025

SE-1, 15 MAY 2025 to 12 JUN 2025



ELEV 1256	TDZE 1243
-----------	-----------

MIRL Rwy 14-32
REIL Rws 14 and 32

FAF to MAP 5 NM

Knots	60	90	120	150	180
Min:Seq	5:00	3:20	2:30	2:00	1:40

CATEGORY	A	B	C	D
S-LOC 14	1800-1	557 (600-1)	1800-1½	557 (600-1½)
CIRCLING	2000-1 744 (800-1)	2040-1 784 (800-1)	2060-2¼ 804 (900-2¼)	2140-3 884 (900-3)