

VOR/DME GEE <b>108.2</b> Chan <b>19</b>	APP CRS <b>085°</b>	Rwy Idg TDZE Apt Elev <b>814</b>	<b>N/A</b> <b>N/A</b> <b>814</b>
---	------------------------	---	--

# VOR-A

CANANDAIGUA (IUA)

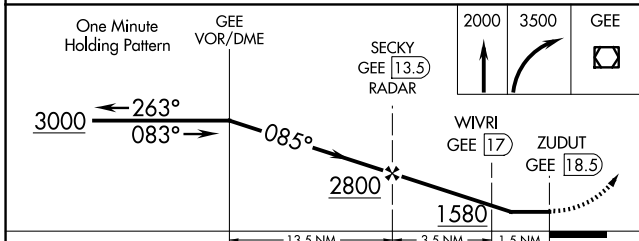
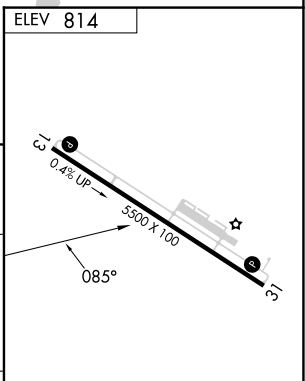
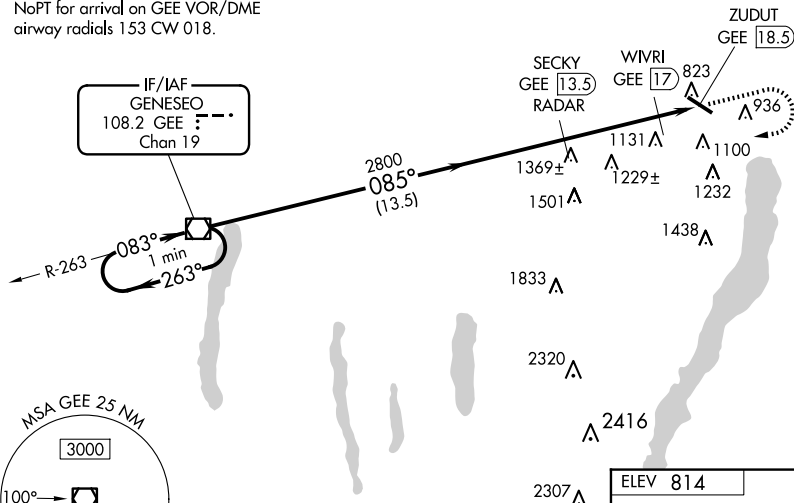
DME or RADAR required.

⚠ When local altimeter setting not received, use Rochester altimeter setting and increase all MDAs 100 feet and Circling visibility all Cats ¼ SM, increase WIVRI Fix Circling minimums visibility Cat C ½ SM.

MISSED APPROACH: Climb to 2000 then climbing right turn to 3500 direct GEE VOR/DME and hold.

AWOS-3P <b>118.675</b>	ROCHESTER APP CON <b>119.55 269.6</b>	UNICOM <b>122.8 (CTAF) 0</b>
---------------------------	--	---------------------------------

NoPT for arrival on GEE VOR/DME  
airway radials 153 CW 018.



CATEGORY	A	B	C	D	MIRL Rwy 13-31 REIL Rws 13 and 31												
<b>CIRCLING</b>	1580-1	766 (800-1)	1580-2 ¼ 766 (800-2 ¼)	NA		FAF to MAP 5 NM											
WIVRI FIX MINIMUMS																	
<b>CIRCLING</b>	1500-1	686 (700-1)	1540-2 726 (800-2)	NA	<table border="1"> <tr> <td>Knots</td> <td>60</td> <td>90</td> <td>120</td> <td>150</td> <td>180</td> </tr> <tr> <td>Min:Sec</td> <td>5:00</td> <td>3:20</td> <td>2:30</td> <td>2:00</td> <td>1:40</td> </tr> </table>	Knots	60	90	120	150	180	Min:Sec	5:00	3:20	2:30	2:00	1:40
Knots	60	90	120	150	180												
Min:Sec	5:00	3:20	2:30	2:00	1:40												

NE-2, 15 MAY 2025 to 12 JUN 2025

NE-2, 15 MAY 2025 to 12 JUN 2025