

| | | | |
|--|------------------------|-----------------------------|---|
| WAAS CH 45725 W13A | APP CRS 135° | Rwy Idg TDZE Apt Elev | 5500 804 814 |
|--|------------------------|-----------------------------|---|

RNAV (GPS) RWY 13

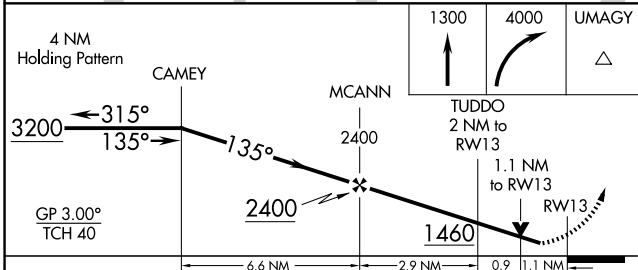
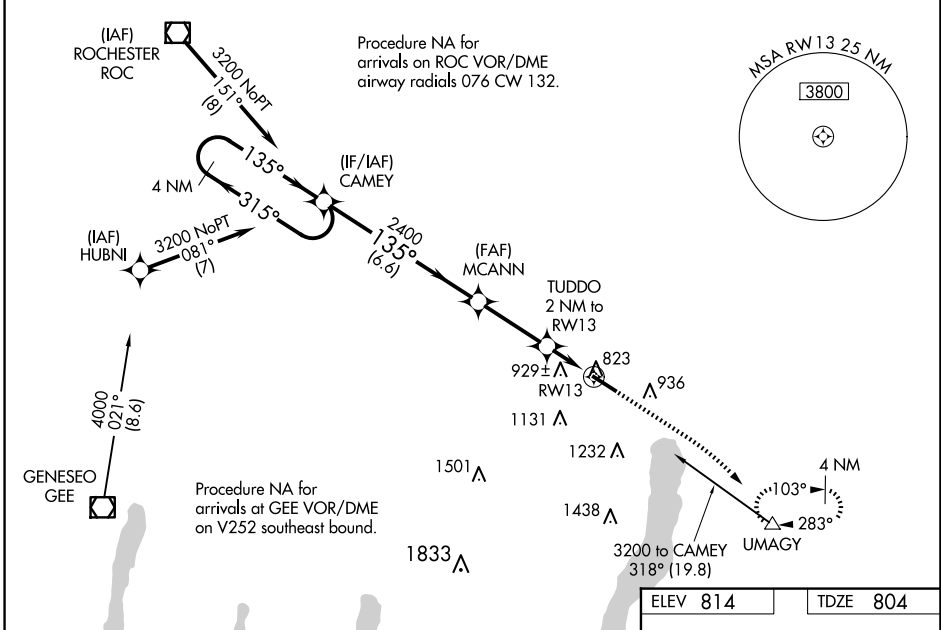
CANANDAIGUA (IUA)

RNP APCH-GPS.

Baro-VNAV and VDP NA when using ROC altimeter setting. Rwy 13 helicopter visibility reduction below 3/4 SM NA. For uncompensated Baro-VNAV systems, LNAV/VNAV NA below -16°C or above 54°C. When local altimeter setting not received, use ROC altimeter setting and increase LPV DA to 1138 feet and all visibilities 1/4 SM. Increase LNAV/VNAV DA to 1333 feet and all visibilities 1/8 SM. Increase all MDAs 100 feet and LNAV visibility Cat C 3/8 SM, and Circling visibility Cat C 1/2 SM.

MISSED APPROACH: Climb to 1300 then climbing right turn to 4000 direct UMAGY and hold, continue climb-in-hold to 4000.

| | | |
|---------------------------|--|-------------------------------|
| AWOS-3P 118.675 | ROCHESTER APP CON 119.55 269.6 | UNICOM 122.8 (CTAF) |
|---------------------------|--|-------------------------------|



| | |
|-------------------------------------|----------|
| ELEV 814 | TDZE 804 |
| | |
| MIRL Rwy 13-31 REL Rws 13 and 31 | |

| CATEGORY | A | B | C | D |
|--------------|------------|-----------------|-----------------------|----|
| LPV DA | 1056-1 | 252 (300-1) | | NA |
| LNAV/VNAV DA | 1251-1 3/8 | 447 (500-1 3/8) | | NA |
| LNAV MDA | 1180-1 | 376 (400-1) | | NA |
| CIRCLING | 1460-1 | 646 (700-1) | 1540-2 726 (800-2) | NA |

NE-2, 15 MAY 2025 to 12 JUN 2025

NE-2, 15 MAY 2025 to 12 JUN 2025