

WAAS CH 81834 W32A	APP CRS 325°	Rwy Idg TDZE 1819 Apt Elev 1823
--	------------------------	---

RNAV (GPS) RWY 32

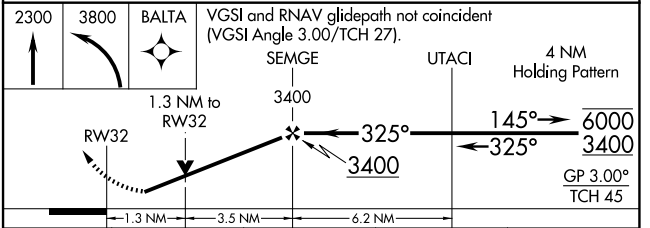
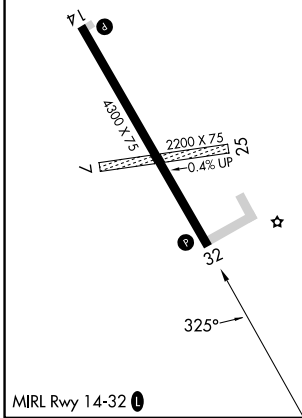
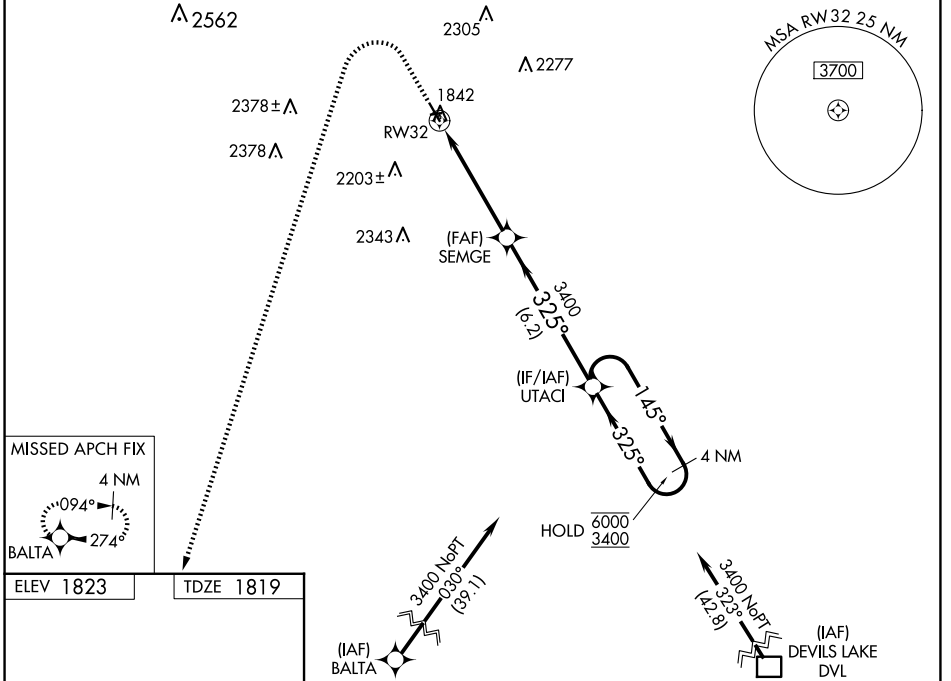
ROLLA MUNI/LEONARD KRECH FLD (Ø6D)

RNP APCH - GPS.

⚠ Circling NA to Rwys 7 and 25. Circling Rwy 14 NA at night. Baro-VNAV and VDP NA when using Cando Muni altimeter setting. Rwy 32 helicopter visibility reduction below ¼ SM NA. For uncompensated Baro-VNAV systems, LNAV/VNAV NA below -18°C or above 54°C. When local altimeter setting not received, use Cando altimeter setting: increase LPV DA to 2183 feet; increase LNAV/VNAV DA to 2286 feet and all visibilities ¾ SM; increase all MDAs 120 feet and LNAV visibility Cat C/D ¾ SM, and Circling visibility Cat C/D ½ SM.

MISSED APPROACH: Climb to 2300 then climbing left turn to 3800 direct BALTA and hold.

AWOS-3 118.125	MINNEAPOLIS CENTER 127.6 279.6	UNICOM 122.8 (CTAF) 0
--------------------------	--	---------------------------------



CATEGORY	A	B	C	D
LPV DA		2069-1	250 (300-1)	
LNAV/VNAV DA		2162-1	343 (400-1)	
LNAV MDA	2260-1	441 (500-1)	2260-1 3/8	441 (500-1 3/8)
CIRCLING	2260-1 437 (500-1)	2340-1 517 (600-1)	2560-2 737 (800-2)	2700-2 3/4 877 (900-2 3/4)

NC-1, 15 MAY 2025 to 12 JUN 2025

NC-1, 15 MAY 2025 to 12 JUN 2025